



[Go to Product page](#)

Datasheet for ABIN6264842

anti-RPL7A antibody (N-Term)

1 Image

Overview

Quantity:	100 µL
Target:	RPL7A
Binding Specificity:	N-Term
Reactivity:	Human, Mouse, Rat
Host:	Rabbit
Clonality:	Polyclonal
Conjugate:	This RPL7A antibody is un-conjugated
Application:	Western Blotting (WB), ELISA

Product Details

Immunogen:	A synthesized peptide derived from human RPL7A, corresponding to a region within N-terminal amino acids.
Isotype:	IgG
Specificity:	RPL7A Antibody detects endogenous levels of total RPL7A.
Predicted Reactivity:	Zebrafish,Bovine,Sheep,Dog,Chicken,Xenopus
Purification:	The antiserum was purified by peptide affinity chromatography using SulfoLink™ Coupling Resin (Thermo Fisher Scientific).

Target Details

Target:	RPL7A
---------	-------

Target Details

Alternative Name: RPL7A ([RPL7A Products](#))

Background: Gene: RPL7A

Molecular Weight: 30kDa

Gene ID: 6130

UniProt: [P62424](#)

Application Details

Application Notes: WB 1:1000-3000, ELISA(peptide) 1:20000-1:40000

Restrictions: For Research Use only

Handling

Format: Liquid

Concentration: 1 mg/mL

Buffer: Rabbit IgG in phosphate buffered saline , pH 7.4, 150 mM NaCl, 0.02 % sodium azide and 50 % glycerol.

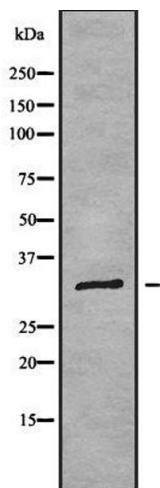
Preservative: Sodium azide

Precaution of Use: This product contains Sodium azide: a POISONOUS AND HAZARDOUS SUBSTANCE which should be handled by trained staff only.

Storage: -20 °C

Storage Comment: Store at -20 °C. Stable for 12 months from date of receipt.

Expiry Date: 12 months



Western Blotting

Image 1. Western blot analysis of RPL7A using K562 whole cell lysates