



[Go to Product page](#)

Datasheet for ABIN6264848

anti-RPS17 antibody (Internal Region)

1 Image

Overview

Quantity:	100 µL
Target:	RPS17
Binding Specificity:	Internal Region
Reactivity:	Human, Mouse, Rat
Host:	Rabbit
Clonality:	Polyclonal
Conjugate:	This RPS17 antibody is un-conjugated
Application:	Western Blotting (WB), ELISA

Product Details

Immunogen:	A synthesized peptide derived from human RPS17, corresponding to a region within the internal amino acids.
Isotype:	IgG
Specificity:	RPS17 Antibody detects endogenous levels of total RPS17.
Predicted Reactivity:	Pig,Zebrafish,Bovine,Horse,Sheep,Rabbit,Dog,Chicken,Xenopus
Purification:	The antiserum was purified by peptide affinity chromatography using SulfoLink™ Coupling Resin (Thermo Fisher Scientific).

Target Details

Target:	RPS17
---------	-------

Target Details

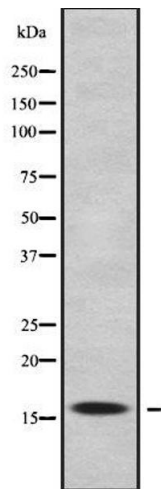
Alternative Name:	RPS17 (RPS17 Products)
Background:	Gene: RPS17
Molecular Weight:	16 kDa
Gene ID:	6218
UniProt:	P08708
Pathways:	Ribonucleoprotein Complex Subunit Organization, Ribosome Assembly

Application Details

Application Notes:	WB 1:1000-3000, ELISA(peptide) 1:20000-1:40000
Restrictions:	For Research Use only

Handling

Format:	Liquid
Concentration:	1 mg/mL
Buffer:	Rabbit IgG in phosphate buffered saline , pH 7.4, 150 mM NaCl, 0.02 % sodium azide and 50 % glycerol.
Preservative:	Sodium azide
Precaution of Use:	This product contains Sodium azide: a POISONOUS AND HAZARDOUS SUBSTANCE which should be handled by trained staff only.
Storage:	-20 °C
Storage Comment:	Store at -20 °C. Stable for 12 months from date of receipt.
Expiry Date:	12 months



Western Blotting

Image 1. Western blot analysis of RPS17 using Jurkat whole cell lysates