



[Go to Product page](#)

Datasheet for ABIN6264852
anti-RPS26L1 antibody

1 Image

Overview

Quantity:	100 µL
Target:	RPS26L1 (RPS26P11)
Reactivity:	Human
Host:	Rabbit
Clonality:	Polyclonal
Conjugate:	This RPS26L1 antibody is un-conjugated
Application:	Western Blotting (WB), ELISA

Product Details

Immunogen:	A synthesized peptide derived from human RPS26L1
Isotype:	IgG
Specificity:	RPS26L1 Antibody detects endogenous levels of total RPS26L1
Cross-Reactivity:	Human
Purification:	The antiserum was purified by peptide affinity chromatography using SulfoLink™ Coupling Resin (Thermo Fisher Scientific).

Target Details

Target:	RPS26L1 (RPS26P11)
Alternative Name:	RPS26L1 (RPS26P11 Products)
Background:	Description: Could be the product of a pseudogene.

Target Details

Gene: RPS26P11

Molecular Weight: 13 kDa

UniProt: [Q5JNZ5](#)

Application Details

Application Notes: WB 1:1000-3000

Restrictions: For Research Use only

Handling

Format: Liquid

Concentration: 1 mg/mL

Buffer: Rabbit IgG in phosphate buffered saline , pH 7.4, 150 mM NaCl, 0.02 % sodium azide and 50 % glycerol.

Preservative: Sodium azide

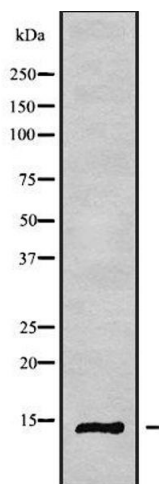
Precaution of Use: This product contains Sodium azide: a POISONOUS AND HAZARDOUS SUBSTANCE which should be handled by trained staff only.

Storage: -20 °C

Storage Comment: Store at -20 °C. Stable for 12 months from date of receipt

Expiry Date: 12 months

Images



Western Blotting

Image 1. Western blot analysis of RPS26L1 using HeLa whole cell lysates