

Datasheet for ABIN6264853  
**anti-RPS27 antibody (Internal Region)**[Go to Product page](#)

## 2 Images

## Overview

Quantity:	100 µL
Target:	RPS27
Binding Specificity:	Internal Region
Reactivity:	Human, Rat, Mouse
Host:	Rabbit
Clonality:	Polyclonal
Conjugate:	This RPS27 antibody is un-conjugated
Application:	Western Blotting (WB), ELISA, Immunohistochemistry (IHC), Immunofluorescence (IF), Immunocytochemistry (ICC)

## Product Details

Immunogen:	A synthesized peptide derived from human RPS27, corresponding to a region within the internal amino acids.
Isotype:	IgG
Specificity:	RPS27 Antibody detects endogenous levels of total RPS27.
Predicted Reactivity:	Pig,Bovine,Horse,Dog,Chicken,Xenopus
Purification:	The antiserum was purified by peptide affinity chromatography using SulfoLink™ Coupling Resin (Thermo Fisher Scientific).

## Target Details

Target:	RPS27
---------	-------

## Target Details

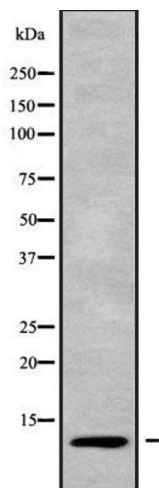
Alternative Name:	RPS27 ( <a href="#">RPS27 Products</a> )
Background:	Description: Component of the small ribosomal subunit (PubMed:8706699). Required for proper rRNA processing and maturation of 18S rRNAs (PubMed:25424902). Gene: RPS27
Molecular Weight:	9 kDa
Gene ID:	6232
UniProt:	<a href="#">P42677</a>

## Application Details

Application Notes:	WB 1:1000-3000, IHC 1:200, IF/ICC 1:100-1:500, ELISA(peptide) 1:20000-1:40000
Restrictions:	For Research Use only

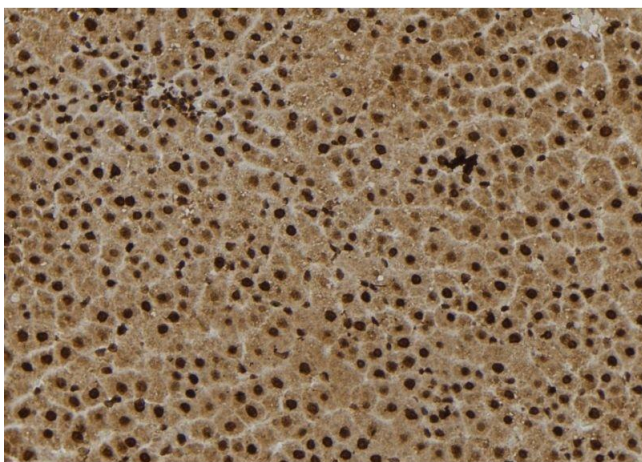
## Handling

Format:	Liquid
Concentration:	1 mg/mL
Buffer:	Rabbit IgG in phosphate buffered saline , pH 7.4, 150 mM NaCl, 0.02 % sodium azide and 50 % glycerol.
Preservative:	Sodium azide
Precaution of Use:	This product contains Sodium azide: a POISONOUS AND HAZARDOUS SUBSTANCE which should be handled by trained staff only.
Storage:	-20 °C
Storage Comment:	Store at -20 °C. Stable for 12 months from date of receipt.
Expiry Date:	12 months



### Western Blotting

**Image 1.** Western blot analysis of RPS27 using K562 whole cell lysates



### Immunohistochemistry

**Image 2.** ABIN6279036 at 1/100 staining Rat liver tissue by IHC-P. The sample was formaldehyde fixed and a heat mediated antigen retrieval step in citrate buffer was performed. The sample was then blocked and incubated with the antibody for 1.5 hours at 22°C. An HRP conjugated goat anti-rabbit antibody was used as the secondary