

Datasheet for ABIN6264854

anti-RPS27A antibody (Internal Region)**2** Images[Go to Product page](#)

Overview

Quantity:	100 µL
Target:	RPS27A
Binding Specificity:	Internal Region
Reactivity:	Human, Mouse, Rat
Host:	Rabbit
Clonality:	Polyclonal
Conjugate:	This RPS27A antibody is un-conjugated
Application:	Western Blotting (WB), ELISA, Immunohistochemistry (IHC), Immunofluorescence (IF), Immunocytochemistry (ICC)

Product Details

Immunogen:	A synthesized peptide derived from human RPS27A, corresponding to a region within the internal amino acids.
Isotype:	IgG
Specificity:	RPS27A Antibody detects endogenous levels of total RPS27A.
Predicted Reactivity:	Pig,Zebrafish,Bovine,Horse,Sheep,Dog,Chicken,Xenopus
Purification:	The antiserum was purified by peptide affinity chromatography using SulfoLink™ Coupling Resin (Thermo Fisher Scientific).

Target Details

Target:	RPS27A
---------	--------

Target Details

Alternative Name:	RPS27A (RPS27A Products)
Background:	<p>Description: Ubiquitin: Exists either covalently attached to another protein, or free (unanchored). When covalently bound, it is conjugated to target proteins via an isopeptide bond either as a monomer (monoubiquitin), a polymer linked via different Lys residues of the ubiquitin (polyubiquitin chains) or a linear polymer linked via the initiator Met of the ubiquitin (linear polyubiquitin chains). Polyubiquitin chains, when attached to a target protein, have different functions depending on the Lys residue of the ubiquitin that is linked: Lys-6-linked may be involved in DNA repair, Lys-11-linked is involved in ERAD (endoplasmic reticulum-associated degradation) and in cell-cycle regulation, Lys-29-linked is involved in lysosomal degradation, Lys-33-linked is involved in kinase modification, Lys-48-linked is involved in protein degradation via the proteasome, Lys-63-linked is involved in endocytosis, DNA-damage responses as well as in signaling processes leading to activation of the transcription factor NF-kappa-B. Linear polymer chains formed via attachment by the initiator Met lead to cell signaling. Ubiquitin is usually conjugated to Lys residues of target proteins, however, in rare cases, conjugation to Cys or Ser residues has been observed. When polyubiquitin is free (unanchored-polyubiquitin), it also has distinct roles, such as in activation of protein kinases, and in signaling.</p> <p>Gene: RPS27A</p>
Molecular Weight:	9kDa
Gene ID:	6233
UniProt:	P62979
Pathways:	Fc-epsilon Receptor Signaling Pathway , EGFR Signaling Pathway , Neurotrophin Signaling Pathway , Activation of Innate immune Response , Mitotic G1-G1/S Phases , DNA Replication , Toll-Like Receptors Cascades , Synthesis of DNA , EGFR Downregulation

Application Details

Application Notes:	WB 1:500-1:2000, IHC 1:50-1:200, IF/ICC 1:100-1:500, ELISA(peptide) 1:20000-1:40000
Restrictions:	For Research Use only

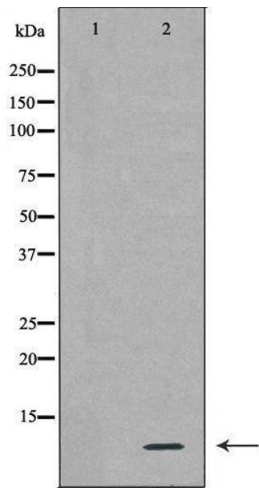
Handling

Format:	Liquid
Concentration:	1 mg/mL
Buffer:	Rabbit IgG in phosphate buffered saline , pH 7.4, 150 mM NaCl, 0.02 % sodium azide and 50 %

Handling

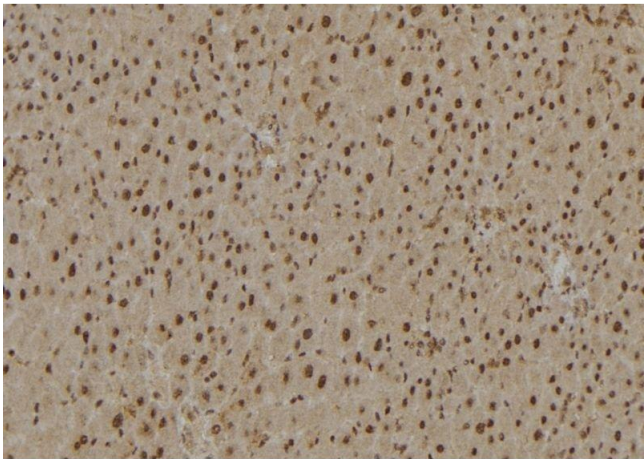
	glycerol.
Preservative:	Sodium azide
Precaution of Use:	This product contains Sodium azide: a POISONOUS AND HAZARDOUS SUBSTANCE which should be handled by trained staff only.
Storage:	-20 °C
Storage Comment:	Store at -20 °C. Stable for 12 months from date of receipt.
Expiry Date:	12 months

Validation report #104234 for Cleavage Under Targets and Release Using Nuclease (CUT&RUN)



Western Blotting

Image 1. Western blot analysis of extracts of HL-60 , using RPS27A antibody. The lane on the left is treated with the antigen-specific peptide.



Immunohistochemistry

Image 2. ABIN6277024 at 1/100 staining Rat liver tissue by IHC-P. The sample was formaldehyde fixed and a heat mediated antigen retrieval step in citrate buffer was performed. The sample was then blocked and incubated with the antibody for 1.5 hours at 22°C. An HRP conjugated goat anti-rabbit antibody was used as the secondary