



[Go to Product page](#)

Datasheet for ABIN6264868

anti-RRM2 antibody (C-Term)

2 Images

1 Publication

Overview

Quantity:	100 µL
Target:	RRM2
Binding Specificity:	C-Term
Reactivity:	Human, Mouse, Rat
Host:	Rabbit
Clonality:	Polyclonal
Conjugate:	This RRM2 antibody is un-conjugated
Application:	Western Blotting (WB), ELISA, Immunohistochemistry (IHC)

Product Details

Immunogen:	A synthesized peptide derived from human RRM2, corresponding to a region within C-terminal amino acids.
Isotype:	IgG
Specificity:	RRM2 Antibody detects endogenous levels of total RRM2.
Predicted Reactivity:	Bovine,Horse,Chicken
Purification:	The antiserum was purified by peptide affinity chromatography using SulfoLink™ Coupling Resin (Thermo Fisher Scientific).

Target Details

Target:	RRM2
---------	------

Target Details

Alternative Name:	RRM2 (RRM2 Products)
Background:	Description: Provides the precursors necessary for DNA synthesis. Catalyzes the biosynthesis of deoxyribonucleotides from the corresponding ribonucleotides. Inhibits Wnt signaling. Gene: RRM2
Molecular Weight:	45kDa
Gene ID:	6241
UniProt:	P31350
Pathways:	Mitotic G1-G1/S Phases

Application Details

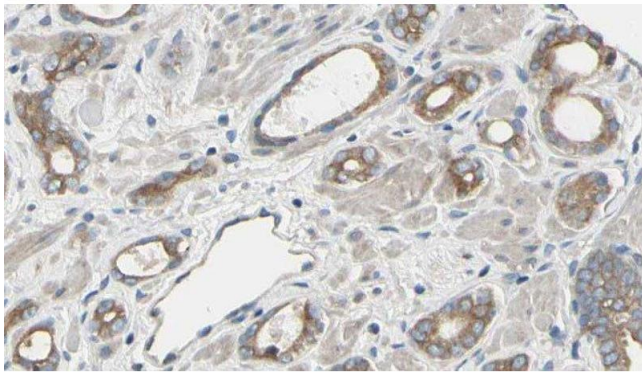
Application Notes:	WB 1:500-1:2000, IHC 1:50-1:200, ELISA(peptide) 1:20000-1:40000
Restrictions:	For Research Use only

Handling

Format:	Liquid
Concentration:	1 mg/mL
Buffer:	Rabbit IgG in phosphate buffered saline , pH 7.4, 150 mM NaCl, 0.02 % sodium azide and 50 % glycerol.
Preservative:	Sodium azide
Precaution of Use:	This product contains Sodium azide: a POISONOUS AND HAZARDOUS SUBSTANCE which should be handled by trained staff only.
Storage:	-20 °C
Storage Comment:	Store at -20 °C. Stable for 12 months from date of receipt.
Expiry Date:	12 months

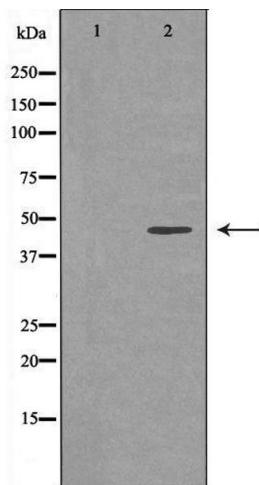
Publications

Product cited in:	Muhanhali, Zhai, Jiang, Ai, Zhu, Ling: "Long Non-coding Antisense RNA TNRC6C-AS1 Is Activated in Papillary Thyroid Cancer and Promotes Cancer Progression by Suppressing TNRC6C Expression." in: Frontiers in endocrinology , Vol. 9, pp. 360, (2018) (PubMed).
-------------------	--



Immunohistochemistry

Image 1. ABIN6277492 at 1/100 staining Human prostate tissue by IHC-P. The sample was formaldehyde fixed and a heat mediated antigen retrieval step in citrate buffer was performed. The sample was then blocked and incubated with the antibody for 1.5 hours at 22°C. An HRP conjugated goat anti-rabbit antibody was used as the secondary



Western Blotting

Image 2. Western blot analysis of Hela whole cell lysates, using RRM2 Antibody. The lane on the left is treated with the antigen-specific peptide.