

Datasheet for ABIN6264894
anti-S100A1 antibody (N-Term)

5 Images

[Go to Product page](#)

Overview

Quantity:	100 µL
Target:	S100A1
Binding Specificity:	N-Term
Reactivity:	Human, Mouse, Rat
Host:	Rabbit
Clonality:	Polyclonal
Conjugate:	This S100A1 antibody is un-conjugated
Application:	Western Blotting (WB), Immunohistochemistry (IHC), ELISA, Immunofluorescence (IF), Immunocytochemistry (ICC)

Product Details

Immunogen:	A synthesized peptide derived from human S100 A1, corresponding to a region within N-terminal amino acids.
Isotype:	IgG
Specificity:	S100 A1 Antibody detects endogenous levels of total S100 A1.
Predicted Reactivity:	Pig,Zebrafish,Bovine,Horse,Sheep,Rabbit,Chicken
Purification:	The antiserum was purified by peptide affinity chromatography using SulfoLink™ Coupling Resin (Thermo Fisher Scientific).

Target Details

Target:	S100A1
---------	--------

Target Details

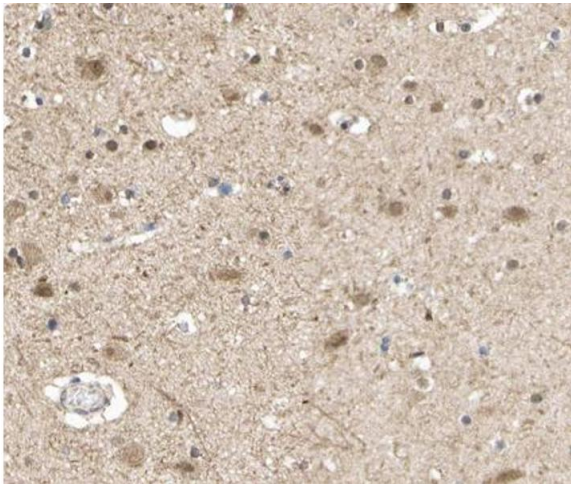
Alternative Name:	S100A1 (S100A1 Products)
Background:	<p>Description: Probably acts as a Ca²⁺ signal transducer (PubMed:22399290). In response to an increase in intracellular Ca²⁺ levels, binds calcium which triggers a conformational change (PubMed:23351007). This conformational change allows interaction of S100A1 with specific target proteins, such as TPR-containing proteins, and the modulation of their activity (PubMed:22399290).</p> <p>Gene: S100A1</p>
Molecular Weight:	10kDa
Gene ID:	6271
UniProt:	P23297
Pathways:	Regulation of Muscle Cell Differentiation , Toll-Like Receptors Cascades , S100 Proteins

Application Details

Application Notes:	WB: 1:500-1:3000, IHC: 1:50-1:200, IF/ICC: 1:100-1:500, ELISA(peptide) 1:20000-1:40000
Restrictions:	For Research Use only

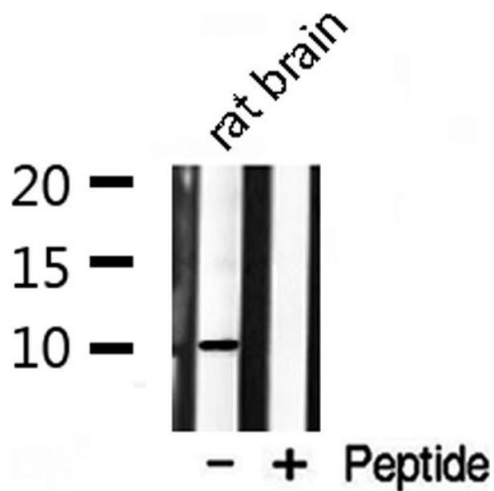
Handling

Format:	Liquid
Concentration:	1 mg/mL
Buffer:	Rabbit IgG in phosphate buffered saline , pH 7.4, 150 mM NaCl, 0.02 % sodium azide and 50 % glycerol.
Preservative:	Sodium azide
Precaution of Use:	This product contains Sodium azide: a POISONOUS AND HAZARDOUS SUBSTANCE which should be handled by trained staff only.
Storage:	-20 °C
Storage Comment:	Store at -20 °C. Stable for 12 months from date of receipt.
Expiry Date:	12 months



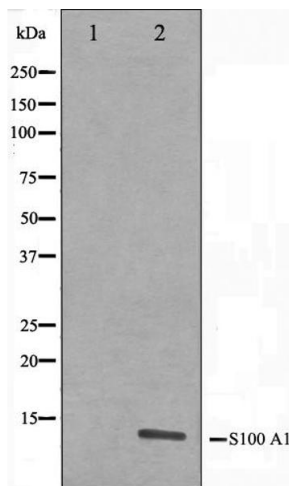
Immunohistochemistry

Image 1. ABIN6266632 at 1/100 staining human brain tissue sections by IHC-P. The tissue was formaldehyde fixed and a heat mediated antigen retrieval step in citrate buffer was performed. The tissue was then blocked and incubated with the antibody for 1.5 hours at 22°C. An HRP conjugated goat anti-rabbit antibody was used as the secondary.



Western Blotting

Image 2. Western blot analysis on rat brain lysate using S100 A1 Antibody



Western Blotting

Image 3. Western blot analysis on A549 cell lysate using S100 A1 Antibody, The lane on the left is treated with the antigen-specific peptide.

Please check the [product details page](#) for more images. Overall 5 images are available for ABIN6264894.