



[Go to Product page](#)

Datasheet for ABIN6264902
anti-S100A2 antibody

2 Images

Overview

Quantity:	100 µL
Target:	S100A2
Reactivity:	Human, Rat
Host:	Rabbit
Clonality:	Polyclonal
Conjugate:	This S100A2 antibody is un-conjugated
Application:	Western Blotting (WB), Immunohistochemistry (IHC), ELISA

Product Details

Immunogen:	A synthesized peptide derived from human S100A2
Isotype:	IgG
Specificity:	S100A2 Antibody detects endogenous levels of total S100A2
Cross-Reactivity:	Human, Rat (Rattus)
Purification:	The antiserum was purified by peptide affinity chromatography using SulfoLink™ Coupling Resin (Thermo Fisher Scientific).

Target Details

Target:	S100A2
Alternative Name:	S100A2 (S100A2 Products)
Background:	Description: May function as calcium sensor and modulator, contributing to cellular calcium

Target Details

signaling. May function by interacting with other proteins, such as TPR-containing proteins, and indirectly play a role in many physiological processes. May also play a role in suppressing tumor cell growth.

Gene: S100A2

Molecular Weight: 11 kDa

Gene ID: 6273

UniProt: [P29034](#)

Pathways: [S100 Proteins](#)

Application Details

Application Notes: WB 1:1000-3000 IHC 1:200

Restrictions: For Research Use only

Handling

Format: Liquid

Concentration: 1 mg/mL

Buffer: Rabbit IgG in phosphate buffered saline , pH 7.4, 150 mM NaCl, 0.02 % sodium azide and 50 % glycerol.

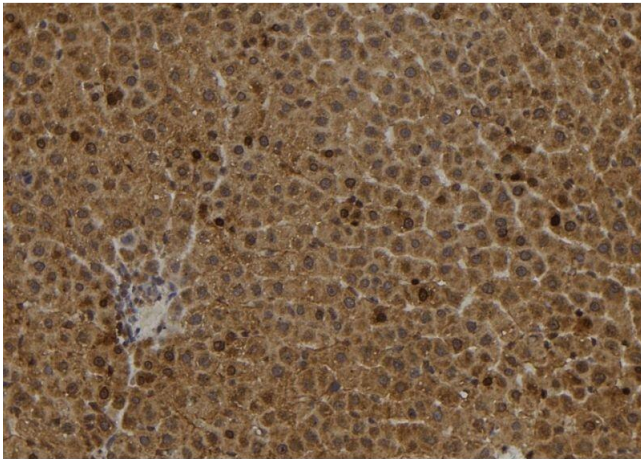
Preservative: Sodium azide

Precaution of Use: This product contains Sodium azide: a POISONOUS AND HAZARDOUS SUBSTANCE which should be handled by trained staff only.

Storage: -20 °C

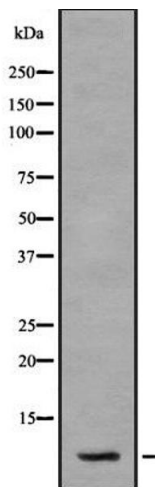
Storage Comment: Store at -20 °C. Stable for 12 months from date of receipt

Expiry Date: 12 months



Immunohistochemistry

Image 1. ABIN6278237 at 1/100 staining Rat liver tissue by IHC-P. The sample was formaldehyde fixed and a heat mediated antigen retrieval step in citrate buffer was performed. The sample was then blocked and incubated with the antibody for 1.5 hours at 22°C. An HRP conjugated goat anti-rabbit antibody was used as the secondary



Western Blotting

Image 2. Western blot analysis S100A2 using HT29 whole cell lysates