



[Go to Product page](#)

Datasheet for ABIN6264903
anti-s100a4 antibody (C-Term)

3 Images

Overview

Quantity:	100 µL
Target:	s100a4 (S100A4)
Binding Specificity:	C-Term
Reactivity:	Human, Mouse, Rat
Host:	Rabbit
Clonality:	Polyclonal
Conjugate:	This s100a4 antibody is un-conjugated
Application:	Western Blotting (WB), Immunohistochemistry (IHC), Immunofluorescence (IF), ELISA, Immunocytochemistry (ICC)

Product Details

Immunogen:	A synthesized peptide derived from human S100A4, corresponding to a region within C-terminal amino acids.
Isotype:	IgG
Specificity:	S100A4 Antibody detects endogenous levels of total S100A4.
Predicted Reactivity:	Pig,Bovine,Horse,Rabbit,Dog
Purification:	The antiserum was purified by peptide affinity chromatography using SulfoLink™ Coupling Resin (Thermo Fisher Scientific).

Target Details

Target:	s100a4 (S100A4)
---------	-----------------

Target Details

Alternative Name: S100A4 ([S100A4 Products](#))

Background: Gene: S100A4

Molecular Weight: 12kDa

Gene ID: 6275

UniProt: [P26447](#)

Pathways: [S100 Proteins](#)

Application Details

Application Notes: WB 1:500-1:2000, IHC 1:50-1:200, IF/ICC 1:100-1:500, ELISA(peptide) 1:20000-1:40000

Restrictions: For Research Use only

Handling

Format: Liquid

Concentration: 1 mg/mL

Buffer: Rabbit IgG in phosphate buffered saline , pH 7.4, 150 mM NaCl, 0.02 % sodium azide and 50 % glycerol.

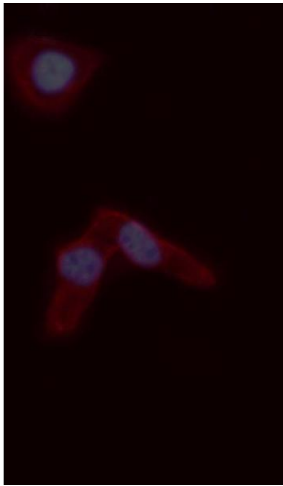
Preservative: Sodium azide

Precaution of Use: This product contains Sodium azide: a POISONOUS AND HAZARDOUS SUBSTANCE which should be handled by trained staff only.

Storage: -20 °C

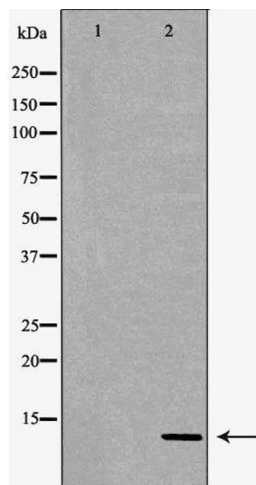
Storage Comment: Store at -20 °C. Stable for 12 months from date of receipt.

Expiry Date: 12 months



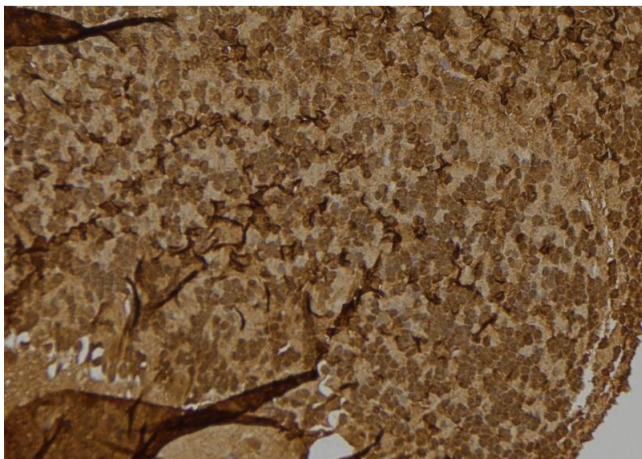
Immunofluorescence (fixed cells)

Image 1. ABIN6276779 staining A549 cells by ICC/IF. Cells were fixed with PFA and permeabilized in 0.1% saponin prior to blocking in 10% serum for 45 minutes at 37°C. The primary antibody was diluted 1/200 and incubated with the sample for 1 hour at 37°C. A Alexa Fluor 594 conjugated goat polyclonal to rabbit IgG (H+L), diluted 1/600 was used as secondary antibody



Western Blotting

Image 2. Western blot analysis of extracts of HeLa, using S100A4 antibody. The lane on the left is treated with the antigen-specific peptide.



Immunohistochemistry

Image 3. ABIN6276779 at 1/100 staining Mouse brain tissue by IHC-P. The sample was formaldehyde fixed and a heat mediated antigen retrieval step in citrate buffer was performed. The sample was then blocked and incubated with the antibody for 1.5 hours at 22°C. An HRP conjugated goat anti-rabbit antibody was used as the secondary