

Datasheet for ABIN6264928  
**anti-SAT1 antibody (C-Term)**



[Go to Product page](#)

2 Images

## Overview

Quantity:	100 µL
Target:	SAT1
Binding Specificity:	C-Term
Reactivity:	Human, Mouse, Rat
Host:	Rabbit
Clonality:	Polyclonal
Conjugate:	This SAT1 antibody is un-conjugated
Application:	Immunohistochemistry (IHC), Western Blotting (WB)

## Product Details

Immunogen:	A synthesized peptide derived from human SAT1, corresponding to a region within C-terminal amino acids.
Isotype:	IgG
Specificity:	SAT1 Antibody detects endogenous levels of total SAT1.
Predicted Reactivity:	Pig,Bovine,Horse,Sheep,Rabbit,Dog,Chicken,Xenopus
Purification:	The antiserum was purified by peptide affinity chromatography using SulfoLink™ Coupling Resin (Thermo Fisher Scientific).

## Target Details

Target:	SAT1
---------	------

## Target Details

---

Alternative Name: SAT1 ([SAT1 Products](#))

---

Background: Description: Enzyme which catalyzes the acetylation of polyamines. Substrate specificity: norspermidine = spermidine >> spermine > N1-acetylspermine > putrescine. This highly regulated enzyme allows a fine attenuation of the intracellular concentration of polyamines. Also involved in the regulation of polyamine transport out of cells. Acts on 1,3-diaminopropane, 1,5-diaminopentane, putrescine, spermidine (forming N1- and N8-acetylspermidine), spermine, N1-acetylspermidine and N8-acetylspermidine.  
Gene: SAT1

---

Molecular Weight: 25-30 kDa

---

Gene ID: 6303

---

UniProt: [P21673](#)

---

## Application Details

---

Application Notes: WB 1:500-1:2000, IHC 1:50-1:200

---

Restrictions: For Research Use only

---

## Handling

---

Format: Liquid

---

Concentration: 1 mg/mL

---

Buffer: Rabbit IgG in phosphate buffered saline , pH 7.4, 150 mM NaCl, 0.02 % sodium azide and 50 % glycerol.

---

Preservative: Sodium azide

---

Precaution of Use: This product contains Sodium azide: a POISONOUS AND HAZARDOUS SUBSTANCE which should be handled by trained staff only.

---

Storage: -20 °C

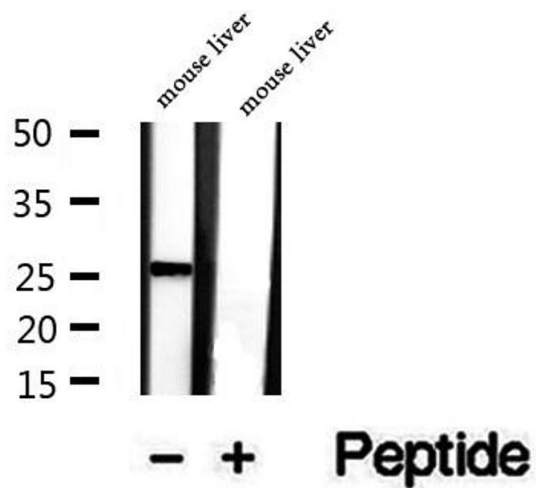
---

Storage Comment: Store at -20 °C. Stable for 12 months from date of receipt.

---

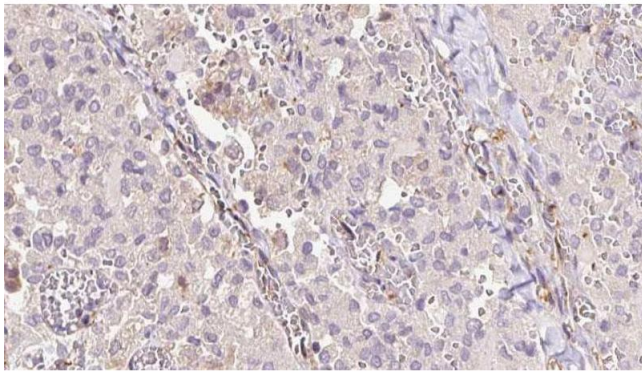
Expiry Date: 12 months

---



### Western Blotting

**Image 1.** Western blot analysis of extracts of mouse liver tissue, using SAT1 antibody.



### Immunohistochemistry

**Image 2.** ABIN6273313 at 1/100 staining Human thyroid cancer tissue by IHC-P. The sample was formaldehyde fixed and a heat mediated antigen retrieval step in citrate buffer was performed. The sample was then blocked and incubated with the antibody for 1.5 hours at 22°C. An HRP conjugated goat anti-rabbit antibody was used as the secondary.