



Datasheet for ABIN6264942  
**anti-SCN11A antibody (Internal Region)**



[Go to Product page](#)

1 Image

Overview

Quantity:	100 µL
Target:	SCN11A
Binding Specificity:	Internal Region
Reactivity:	Human
Host:	Rabbit
Clonality:	Polyclonal
Conjugate:	This SCN11A antibody is un-conjugated
Application:	ELISA, Western Blotting (WB), Immunofluorescence (IF), Immunocytochemistry (ICC)

Product Details

Immunogen:	A synthesized peptide derived from human SCN11A, corresponding to a region within the internal amino acids.
Isotype:	IgG
Specificity:	SCN11A Antibody detects endogenous levels of total SCN11A.
Predicted Reactivity:	Pig,Bovine,Horse,Sheep,Rabbit,Dog
Purification:	The antiserum was purified by peptide affinity chromatography using SulfoLink™ Coupling Resin (Thermo Fisher Scientific).

Target Details

Target:	SCN11A
---------	--------

## Target Details

---

Alternative Name:	SCN11A ( <a href="#">SCN11A Products</a> )
Background:	<p>Description: This protein mediates the voltage-dependent sodium ion permeability of excitable membranes. Assuming opened or closed conformations in response to the voltage difference across the membrane, the protein forms a sodium-selective channel through which sodium ions may pass in accordance with their electrochemical gradient. It is a tetrodotoxin-resistant sodium channel isoform. Also involved, with the contribution of the receptor tyrosine kinase NTRK2, in rapid BDNF-evoked neuronal depolarization.</p> <p>Gene: SCN11A</p>
Molecular Weight:	205 kDa
Gene ID:	11280
UniProt:	<a href="#">Q9UI33</a>

## Application Details

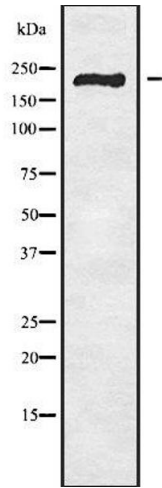
---

Application Notes:	WB 1:1000-3000, IF/ICC 1:100-1:500, ELISA(peptide) 1:20000-1:40000
Restrictions:	For Research Use only

## Handling

---

Format:	Liquid
Concentration:	1 mg/mL
Buffer:	Rabbit IgG in phosphate buffered saline , pH 7.4, 150 mM NaCl, 0.02 % sodium azide and 50 % glycerol.
Preservative:	Sodium azide
Precaution of Use:	This product contains Sodium azide: a POISONOUS AND HAZARDOUS SUBSTANCE which should be handled by trained staff only.
Storage:	-20 °C
Storage Comment:	Store at -20 °C. Stable for 12 months from date of receipt.
Expiry Date:	12 months



### Western Blotting

**Image 1.** Western blot analysis SCN11A using 293 whole cell lysates