



[Go to Product page](#)

Datasheet for ABIN6264943  
**anti-SCN1B antibody (C-Term)**

1 Image

Overview

Quantity:	100 µL
Target:	SCN1B
Binding Specificity:	C-Term
Reactivity:	Human, Mouse, Rat
Host:	Rabbit
Clonality:	Polyclonal
Conjugate:	This SCN1B antibody is un-conjugated
Application:	Western Blotting (WB), Immunohistochemistry (IHC), ELISA

Product Details

Immunogen:	A synthesized peptide derived from human SCN1B, corresponding to a region within C-terminal amino acids.
Isotype:	IgG
Specificity:	SCN1B Antibody detects endogenous levels of total SCN1B.
Predicted Reactivity:	Pig,Bovine,Horse,Sheep,Rabbit,Dog
Purification:	The antiserum was purified by peptide affinity chromatography using SulfoLink™ Coupling Resin (Thermo Fisher Scientific).

Target Details

Target:	SCN1B
---------	-------

## Target Details

---

Alternative Name: [SCN1B \(SCN1B Products\)](#)

---

Background: Description: Crucial in the assembly, expression, and functional modulation of the heterotrimeric complex of the sodium channel. The subunit beta-1 can modulate multiple alpha subunit isoforms from brain, skeletal muscle, and heart. Its association with NFASC may target the sodium channels to the nodes of Ranvier of developing axons and retain these channels at the nodes in mature myelinated axons.

Gene: SCN1B

---

Molecular Weight: 25 kDa

---

Gene ID: 6324

---

UniProt: [Q07699](#)

---

## Application Details

---

Application Notes: WB 1:1000-3000, IHC 1:50-1:200, ELISA(peptide) 1:20000-1:40000

---

Restrictions: For Research Use only

---

## Handling

---

Format: Liquid

---

Concentration: 1 mg/mL

---

Buffer: Rabbit IgG in phosphate buffered saline , pH 7.4, 150 mM NaCl, 0.02 % sodium azide and 50 % glycerol.

---

Preservative: Sodium azide

---

Precaution of Use: This product contains Sodium azide: a POISONOUS AND HAZARDOUS SUBSTANCE which should be handled by trained staff only.

---

Storage: -20 °C

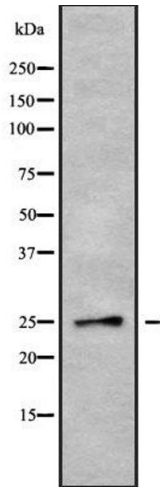
---

Storage Comment: Store at -20 °C. Stable for 12 months from date of receipt.

---

Expiry Date: 12 months

---



### Western Blotting

**Image 1.** Western blot analysis SCN1B using HepG2 whole cell lysates