

Datasheet for ABIN6264944

**anti-SCNM1 antibody**

## 2 Images

[Go to Product page](#)

## Overview

Quantity:	100 µL
Target:	SCNM1
Reactivity:	Human, Rat
Host:	Rabbit
Clonality:	Polyclonal
Conjugate:	This SCNM1 antibody is un-conjugated
Application:	ELISA, Western Blotting (WB), Immunohistochemistry (IHC)

## Product Details

Immunogen:	A synthesized peptide derived from human SCNM1
Isotype:	IgG
Specificity:	SCNM1 Antibody detects endogenous levels of total SCNM1
Cross-Reactivity:	Human, Rat (Rattus)
Purification:	The antiserum was purified by peptide affinity chromatography using SulfoLink™ Coupling Resin (Thermo Fisher Scientific).

## Target Details

Target:	SCNM1
Alternative Name:	SCNM1 ( <a href="#">SCNM1 Products</a> )
Background:	Description: Plays a role in RNA splicing, possibly contributing to the recognition of non-

## Target Details

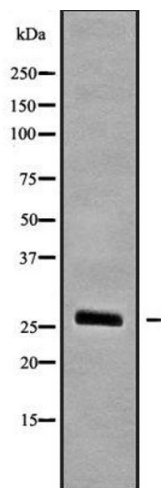
	consensus donor sites.
	Gene: SCNM1
Molecular Weight:	26 kDa
Gene ID:	10, 053, 401
UniProt:	<a href="#">Q9BWG6</a>

## Application Details

Application Notes:	WB 1:1000-3000 IHC 1:200
Restrictions:	For Research Use only

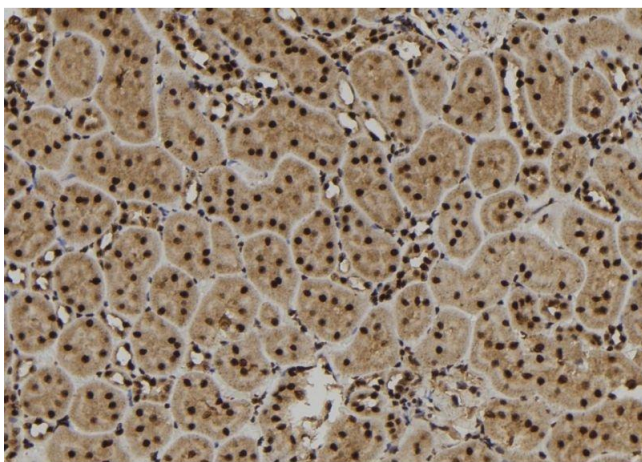
## Handling

Format:	Liquid
Concentration:	1 mg/mL
Buffer:	Rabbit IgG in phosphate buffered saline , pH 7.4, 150 mM NaCl, 0.02 % sodium azide and 50 % glycerol.
Preservative:	Sodium azide
Precaution of Use:	This product contains Sodium azide: a POISONOUS AND HAZARDOUS SUBSTANCE which should be handled by trained staff only.
Storage:	-20 °C
Storage Comment:	Store at -20 °C.Stable for 12 months from date of receipt
Expiry Date:	12 months



### Western Blotting

**Image 1.** Western blot analysis SCNM1 using COS7 whole cell lysates



### Immunohistochemistry

**Image 2.** ABIN6279839 at 1/100 staining Rat kidney tissue by IHC-P. The sample was formaldehyde fixed and a heat mediated antigen retrieval step in citrate buffer was performed. The sample was then blocked and incubated with the antibody for 1.5 hours at 22°C. An HRP conjugated goat anti-rabbit antibody was used as the secondary