

Datasheet for ABIN6264945

**anti-SCNN1A antibody (Internal Region)**[Go to Product page](#)**2** Images**1** Publication

## Overview

Quantity:	100 µL
Target:	SCNN1A
Binding Specificity:	Internal Region
Reactivity:	Rat, Human, Mouse
Host:	Rabbit
Clonality:	Polyclonal
Conjugate:	This SCNN1A antibody is un-conjugated
Application:	Western Blotting (WB), Immunohistochemistry (IHC), Immunofluorescence (IF), Immunocytochemistry (ICC), ELISA

## Product Details

Immunogen:	A synthesized peptide derived from human SCNN1A, corresponding to a region within the internal amino acids.
Isotype:	IgG
Specificity:	SCNN1A Antibody detects endogenous levels of total SCNN1A.
Predicted Reactivity:	Pig,Bovine,Horse,Sheep,Rabbit,Dog,Chicken
Purification:	The antiserum was purified by peptide affinity chromatography using SulfoLink™ Coupling Resin (Thermo Fisher Scientific).

## Target Details

Target:	SCNN1A
---------	--------

## Target Details

Alternative Name:	SCNN1A ( <a href="#">SCNN1A Products</a> )
Background:	<p>Description: Sodium permeable non-voltage-sensitive ion channel inhibited by the diuretic amiloride. Mediates the electrodiffusion of the luminal sodium (and water, which follows osmotically) through the apical membrane of epithelial cells. Plays an essential role in electrolyte and blood pressure homeostasis, but also in airway surface liquid homeostasis, which is important for proper clearance of mucus. Controls the reabsorption of sodium in kidney, colon, lung and eccrine sweat glands. Also plays a role in taste perception.</p> <p>Gene: SCNN1A</p>
Molecular Weight:	76kDa
Gene ID:	6337
UniProt:	<a href="#">P37088</a>

## Application Details

Application Notes:	WB 1:1000-3000, IHC 1:100-200, IF/ICC 1:100-1:500, ELISA(peptide) 1:20000-1:40000
Restrictions:	For Research Use only

## Handling

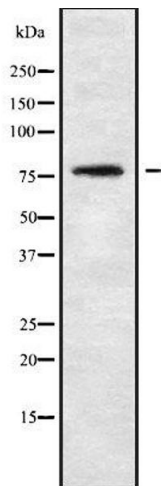
Format:	Liquid
Concentration:	1 mg/mL
Buffer:	Rabbit IgG in phosphate buffered saline , pH 7.4, 150 mM NaCl, 0.02 % sodium azide and 50 % glycerol.
Preservative:	Sodium azide
Precaution of Use:	This product contains Sodium azide: a POISONOUS AND HAZARDOUS SUBSTANCE which should be handled by trained staff only.
Storage:	-20 °C
Storage Comment:	Store at -20 °C. Stable for 12 months from date of receipt.
Expiry Date:	12 months

## Publications

Product cited in:	Li, Chen, Yang, He, He, Xia, Zhang, Xiang: "Single-walled carbon nanohorn aggregates promotes
-------------------	---

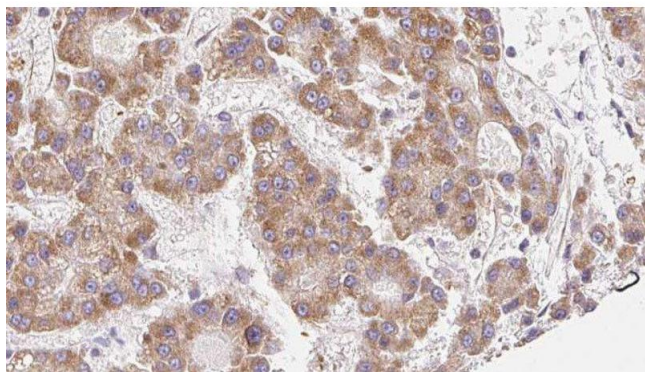
mitochondrial dysfunction-induced apoptosis in hepatoblastoma cells by targeting SIRT3." in:  
**International journal of oncology**, Vol. 53, Issue 3, pp. 1129-1137, (2018) ([PubMed](#)).

Images



Western Blotting

**Image 1.** Western blot analysis SCNN1A using HuvEc whole cell lysates



Immunohistochemistry

**Image 2.** ABIN6279113 at 1/100 staining Human liver cancer tissue by IHC-P. The sample was formaldehyde fixed and a heat mediated antigen retrieval step in citrate buffer was performed. The sample was then blocked and incubated with the antibody for 1.5 hours at 22°C. An HRP conjugated goat anti-rabbit antibody was used as the secondary