

Datasheet for ABIN6264959  
**anti-EXOC2 antibody (N-Term)**

## 3 Images

[Go to Product page](#)

## Overview

Quantity:	100 µL
Target:	EXOC2
Binding Specificity:	N-Term
Reactivity:	Human, Mouse, Rat
Host:	Rabbit
Clonality:	Polyclonal
Conjugate:	This EXOC2 antibody is un-conjugated
Application:	Western Blotting (WB), Immunohistochemistry (IHC), Immunofluorescence (IF), Immunocytochemistry (ICC)

## Product Details

Immunogen:	A synthesized peptide derived from human SEC5/EXOC2, corresponding to a region within N-terminal amino acids.
Isotype:	IgG
Specificity:	SEC5/EXOC2 Antibody detects endogenous levels of total SEC5/EXOC2.
Predicted Reactivity:	Pig,Zebrafish,Bovine,Sheep,Rabbit,Dog,Chicken,Xenopus
Purification:	The antiserum was purified by peptide affinity chromatography using SulfoLink™ Coupling Resin (Thermo Fisher Scientific).

## Target Details

Target:	EXOC2
---------	-------

## Target Details

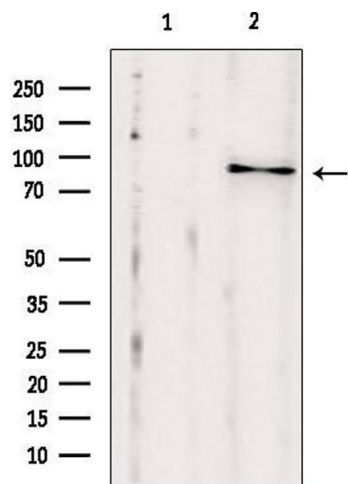
Alternative Name:	EXOC2 ( <a href="#">EXOC2 Products</a> )
Background:	Description: Component of the exocyst complex involved in the docking of exocytic vesicles with fusion sites on the plasma membrane. Gene: EXOC2
Molecular Weight:	95-100 kDa
Gene ID:	55770
UniProt:	<a href="#">Q96KP1</a>
Pathways:	<a href="#">Peptide Hormone Metabolism</a> , <a href="#">Regulation of Actin Filament Polymerization</a> , <a href="#">Synaptic Vesicle Exocytosis</a>

## Application Details

Application Notes:	WB 1:500-1:2000, IHC 1:50-1:200, IF/ICC 1:100-1:500
Restrictions:	For Research Use only

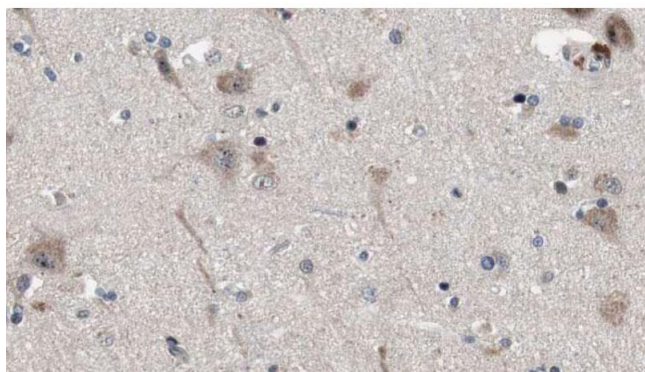
## Handling

Format:	Liquid
Concentration:	1 mg/mL
Buffer:	Rabbit IgG in phosphate buffered saline , pH 7.4, 150 mM NaCl, 0.02 % sodium azide and 50 % glycerol.
Preservative:	Sodium azide
Precaution of Use:	This product contains Sodium azide: a POISONOUS AND HAZARDOUS SUBSTANCE which should be handled by trained staff only.
Storage:	-20 °C
Storage Comment:	Store at -20 °C. Stable for 12 months from date of receipt.
Expiry Date:	12 months



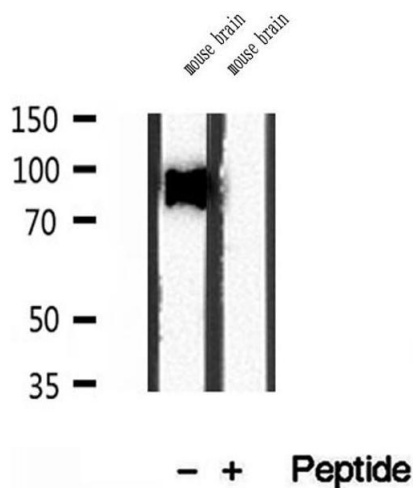
Western Blotting

**Image 1.** Western blot analysis of extracts from HepG2, using SEC5/EXOC2 antibody. Lane 1 was treated with the blocking peptide.



Immunohistochemistry

**Image 2.** ABIN6272887 at 1/100 staining Human brain cancer tissue by IHC-P. The sample was formaldehyde fixed and a heat mediated antigen retrieval step in citrate buffer was performed. The sample was then blocked and incubated with the antibody for 1.5 hours at 22°C. An HRP conjugated goat anti-rabbit antibody was used as the secondary.



Western Blotting

**Image 3.** Western blot analysis of extracts of mouse brain tissue, using SEC5/EXOC2 antibody.