

Datasheet for ABIN6264971

**anti-Selectin E/CD62e antibody (N-Term)**

3 Images

[Go to Product page](#)

## Overview

Quantity:	100 µL
Target:	Selectin E/CD62e (SELE)
Binding Specificity:	N-Term
Reactivity:	Human, Mouse, Rat
Host:	Rabbit
Clonality:	Polyclonal
Conjugate:	This Selectin E/CD62e antibody is un-conjugated
Application:	Western Blotting (WB), Immunohistochemistry (IHC), ELISA, Immunocytochemistry (ICC), Immunofluorescence (IF)

## Product Details

Immunogen:	A synthesized peptide derived from human SELE/CD62E, corresponding to a region within N-terminal amino acids.
Isotype:	IgG
Specificity:	SELE/CD62E Antibody detects endogenous levels of total SELE/CD62E.
Predicted Reactivity:	Pig,Bovine,Horse,Sheep,Rabbit,Dog
Purification:	The antiserum was purified by peptide affinity chromatography using SulfoLink™ Coupling Resin (Thermo Fisher Scientific).

## Target Details

Target:	Selectin E/CD62e (SELE)
---------	-------------------------

## Target Details

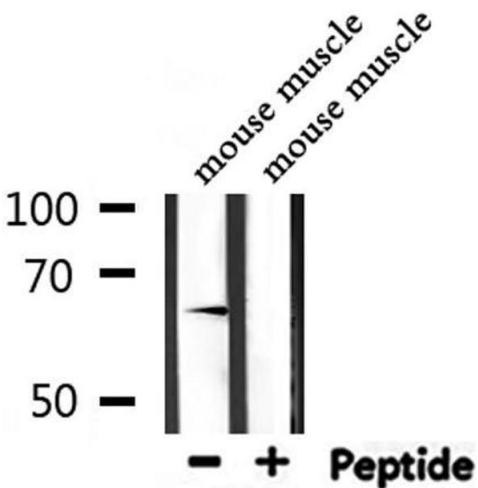
Alternative Name:	SELE ( <a href="#">SELE Products</a> )
Background:	Description: Cell-surface glycoprotein having a role in immunoadhesion. Mediates in the adhesion of blood neutrophils in cytokine-activated endothelium through interaction with SELPLG/PSGL1. May have a role in capillary morphogenesis.  Gene: SELE
Molecular Weight:	67kDa
Gene ID:	6401
UniProt:	<a href="#">P16581</a>
Pathways:	<a href="#">Thromboxane A2 Receptor Signaling</a>

## Application Details

Application Notes:	WB 1:500-1:2000, IHC 1:50-1:200, IF/ICC 1:100-1:500, ELISA(peptide) 1:20000-1:40000
Restrictions:	For Research Use only

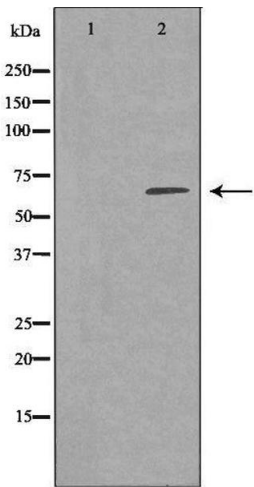
## Handling

Format:	Liquid
Concentration:	1 mg/mL
Buffer:	Rabbit IgG in phosphate buffered saline , pH 7.4, 150 mM NaCl, 0.02 % sodium azide and 50 % glycerol.
Preservative:	Sodium azide
Precaution of Use:	This product contains Sodium azide: a POISONOUS AND HAZARDOUS SUBSTANCE which should be handled by trained staff only.
Storage:	-20 °C
Storage Comment:	Store at -20 °C. Stable for 12 months from date of receipt.
Expiry Date:	12 months



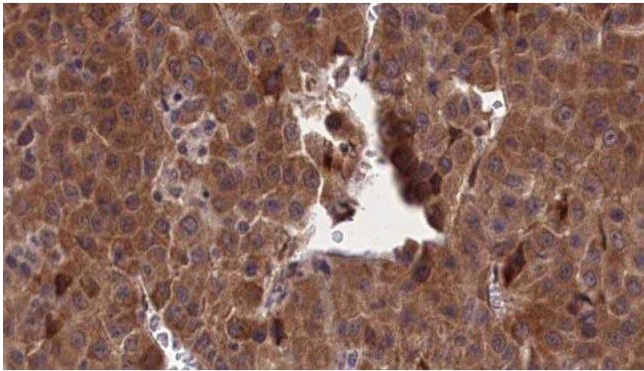
Western Blotting

**Image 1.** Western blot analysis of extracts from mouse muscle, using SELE Antibody.



Western Blotting

**Image 2.** Western blot analysis of Jurkat whole cell lysates, using SELE Antibody. The lane on the left is treated with the antigen-specific peptide.



Immunohistochemistry

**Image 3.** ABIN6277173 at 1/100 staining Human liver cancer tissue by IHC-P. The sample was formaldehyde fixed and a heat mediated antigen retrieval step in citrate buffer was performed. The sample was then blocked and incubated with the antibody for 1.5 hours at 22°C. An HRP conjugated goat anti-rabbit antibody was used as the secondary