

Datasheet for ABIN6264972  
**anti-SELENBP1 antibody (N-Term)**

## 2 Images

[Go to Product page](#)

## Overview

Quantity:	100 µL
Target:	SELENBP1
Binding Specificity:	N-Term
Reactivity:	Human, Mouse, Rat
Host:	Rabbit
Clonality:	Polyclonal
Conjugate:	This SELENBP1 antibody is un-conjugated
Application:	Western Blotting (WB), Immunohistochemistry (IHC), ELISA, Immunofluorescence (IF), Immunocytochemistry (ICC)

## Product Details

Immunogen:	A synthesized peptide derived from human SELENBP1, corresponding to a region within N-terminal amino acids.
Isotype:	IgG
Specificity:	SELENBP1 Antibody detects endogenous levels of total SELENBP1.
Predicted Reactivity:	Pig,Zebrafish,Bovine,Horse,Sheep,Rabbit,Dog,Chicken,Xenopus
Purification:	The antiserum was purified by peptide affinity chromatography using SulfoLink™ Coupling Resin (Thermo Fisher Scientific).

## Target Details

Target:	SELENBP1
---------	----------

## Target Details

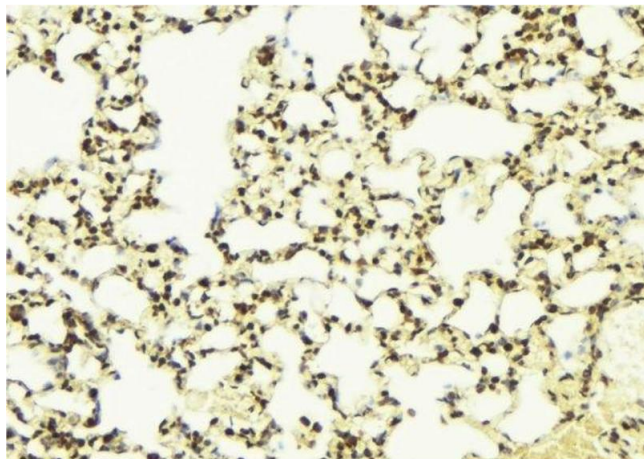
Alternative Name:	SELENBP1 ( <a href="#">SELENBP1 Products</a> )
Background:	<p>Description: Catalyzes the oxidation of methanethiol, an organosulfur compound known to be produced in substantial amounts by gut bacteria (PubMed:29255262). Selenium-binding protein which may be involved in the sensing of reactive xenobiotics in the cytoplasm. May be involved in intra-Golgi protein transport (By similarity).</p> <p>Gene: SELENBP1</p>
Molecular Weight:	52kDa
Gene ID:	8991
UniProt:	<a href="#">Q13228</a>
Pathways:	<a href="#">Brown Fat Cell Differentiation</a>

## Application Details

Application Notes:	WB 1:500-1:2000, IHC 1:50-1:200, IF/ICC 1:100-1:500, ELISA(peptide) 1:20000-1:40000
Restrictions:	For Research Use only

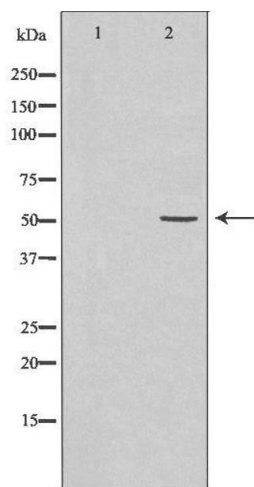
## Handling

Format:	Liquid
Concentration:	1 mg/mL
Buffer:	Rabbit IgG in phosphate buffered saline , pH 7.4, 150 mM NaCl, 0.02 % sodium azide and 50 % glycerol.
Preservative:	Sodium azide
Precaution of Use:	This product contains Sodium azide: a POISONOUS AND HAZARDOUS SUBSTANCE which should be handled by trained staff only.
Storage:	-20 °C
Storage Comment:	Store at -20 °C. Stable for 12 months from date of receipt.
Expiry Date:	12 months



### Immunohistochemistry

**Image 1.** ABIN6276622 at 1/100 staining Mouse lung tissue by IHC-P. The sample was formaldehyde fixed and a heat mediated antigen retrieval step in citrate buffer was performed. The sample was then blocked and incubated with the antibody for 1.5 hours at 22°C. An HRP conjugated goat anti-rabbit antibody was used as the secondary



### Western Blotting

**Image 2.** Western blot analysis of 721\_B lysate using SELENBP1 antibody. The lane on the left is treated with the antigen-specific peptide.