

Datasheet for ABIN6264979

anti-SEMA4D/CD100 antibody (C-Term)**2** Images[Go to Product page](#)

Overview

Quantity:	100 µL
Target:	SEMA4D/CD100 (SEMA4D)
Binding Specificity:	C-Term
Reactivity:	Human
Host:	Rabbit
Clonality:	Polyclonal
Conjugate:	This SEMA4D/CD100 antibody is un-conjugated
Application:	Western Blotting (WB), Immunohistochemistry (IHC), ELISA

Product Details

Immunogen:	A synthesized peptide derived from human SEMA4D, corresponding to a region within C-terminal amino acids.
Isotype:	IgG
Specificity:	SEMA4D Antibody detects endogenous levels of total SEMA4D.
Predicted Reactivity:	Pig, Sheep, Rabbit, Dog
Purification:	The antiserum was purified by peptide affinity chromatography using SulfoLink™ Coupling Resin (Thermo Fisher Scientific).

Target Details

Target:	SEMA4D/CD100 (SEMA4D)
---------	-----------------------

Target Details

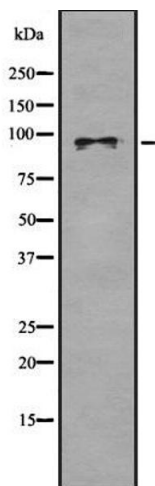
Alternative Name:	SEMA4D (SEMA4D Products)
Background:	<p>Description: Cell surface receptor for PLXN1B and PLXNB2 that plays an important role in cell-cell signaling. Promotes reorganization of the actin cytoskeleton and plays a role in axonal growth cone guidance in the developing central nervous system. Regulates dendrite and axon branching and morphogenesis. Promotes the migration of cerebellar granule cells and of endothelial cells. Plays a role in the immune system, induces B-cells to aggregate and improves their viability (in vitro). Promotes signaling via SRC and PTK2B/PYK2, which then mediates activation of phosphatidylinositol 3-kinase and of the AKT1 signaling cascade. Interaction with PLXNB1 mediates activation of RHOA.</p> <p>Gene: SEMA4D</p>
Molecular Weight:	96 kDa
Gene ID:	10507
UniProt:	Q92854
Pathways:	Regulation of Cell Size

Application Details

Application Notes:	WB 1:1000-3000, IHC 1:200, ELISA(peptide) 1:20000-1:40000
Restrictions:	For Research Use only

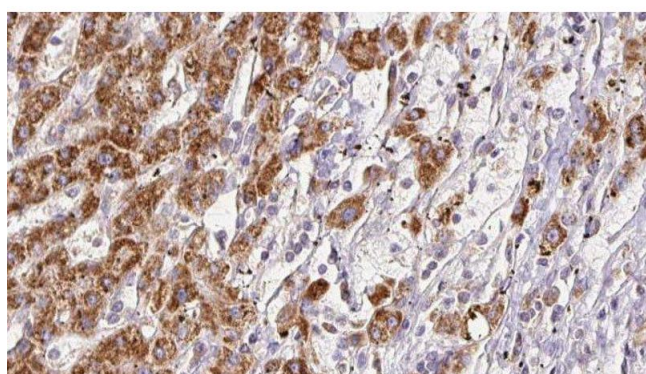
Handling

Format:	Liquid
Concentration:	1 mg/mL
Buffer:	Rabbit IgG in phosphate buffered saline , pH 7.4, 150 mM NaCl, 0.02 % sodium azide and 50 % glycerol.
Preservative:	Sodium azide
Precaution of Use:	This product contains Sodium azide: a POISONOUS AND HAZARDOUS SUBSTANCE which should be handled by trained staff only.
Storage:	-20 °C
Storage Comment:	Store at -20 °C. Stable for 12 months from date of receipt.
Expiry Date:	12 months



Western Blotting

Image 1. Western blot analysis SEMA4D using K562 whole cell lysates



Immunohistochemistry

Image 2. ABIN6278126 at 1/100 staining Human liver cancer tissue by IHC-P. The sample was formaldehyde fixed and a heat mediated antigen retrieval step in citrate buffer was performed. The sample was then blocked and incubated with the antibody for 1.5 hours at 22°C. An HRP conjugated goat anti-rabbit antibody was used as the secondary