



[Go to Product page](#)

Datasheet for ABIN6264984

## anti-SEN2 antibody

### 3 Images

#### Overview

Quantity:	100 µL
Target:	SEN2
Reactivity:	Human, Mouse, Rat
Host:	Rabbit
Clonality:	Polyclonal
Conjugate:	This SEN2 antibody is un-conjugated
Application:	Western Blotting (WB), ELISA, Immunofluorescence (IF), Immunocytochemistry (ICC)

#### Product Details

Immunogen:	A synthesized peptide derived from human SEN2
Isotype:	IgG
Specificity:	SEN2 Antibody detects endogenous levels of total SEN2
Cross-Reactivity:	Human, Mouse (Murine), Rat (Rattus)
Purification:	The antiserum was purified by peptide affinity chromatography using SulfoLink™ Coupling Resin (Thermo Fisher Scientific).

#### Target Details

Target:	SEN2
Alternative Name:	SEN2 ( <a href="#">SEN2 Products</a> )
Background:	Description: Protease that catalyzes two essential functions in the SUMO pathway. The first is

## Target Details

---

the hydrolysis of an alpha-linked peptide bond at the C-terminal end of the small ubiquitin-like modifier (SUMO) propeptides, SUMO1, SUMO2 and SUMO3 leading to the mature form of the proteins. The second is the deconjugation of SUMO1, SUMO2 and SUMO3 from targeted proteins, by cleaving an epsilon-linked peptide bond between the C-terminal glycine of the mature SUMO and the lysine epsilon-amino group of the target protein. May down-regulate CTNNB1 levels and thereby modulate the Wnt pathway. Deconjugates SUMO2 from MTA1. Plays a dynamic role in adipogenesis by desumoylating and promoting the stabilization of CEBPB (PubMed:20194620).

Gene: SENP2

---

Molecular Weight: 68 kDa

---

Gene ID: 59343

---

UniProt: [Q9HC62](#)

---

Pathways: [Chromatin Binding](#)

## Application Details

---

Application Notes: WB 1:1000-3000 IF/ICC 1:200-1:500

Restrictions: For Research Use only

## Handling

---

Format: Liquid

Concentration: 1 mg/mL

Buffer: Rabbit IgG in phosphate buffered saline , pH 7.4, 150 mM NaCl, 0.02 % sodium azide and 50 % glycerol.

Preservative: Sodium azide

Precaution of Use: This product contains Sodium azide: a POISONOUS AND HAZARDOUS SUBSTANCE which should be handled by trained staff only.

Storage: -20 °C

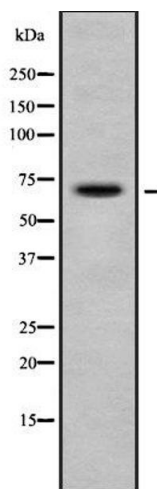
Storage Comment: Store at -20 °C.Stable for 12 months from date of receipt

Expiry Date: 12 months



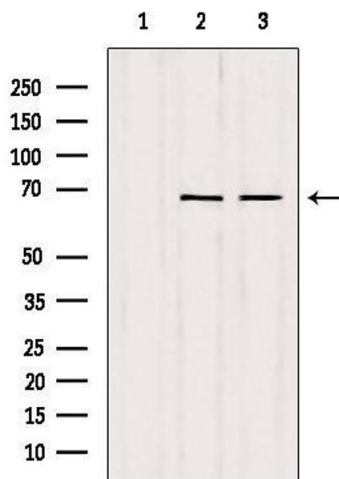
### Immunofluorescence (fixed cells)

**Image 1.** ABIN6278347 staining MDA-MB-435 cells by IF/ICC. The sample were fixed with PFA and permeabilized in 0.1% Triton X-100, then blocked in 10% serum for 45 minutes at 25°C. The primary antibody was diluted at 1/200 and incubated with the sample for 1 hour at 37°C. An Alexa Fluor 594 conjugated goat anti-rabbit IgG (H+L) antibody (Cat.# S0006), diluted at 1/600, was used as secondary antibody



### Western Blotting

**Image 2.** Western blot analysis SENP2 using COS7 whole cell lysates



### Western Blotting

**Image 3.** Western blot analysis of extracts from various samples, using SENP2 Antibody. Lane 1: mouse brain treated with blocking peptide. Lane 2: mouse brain; Lane 3: rat brain;