

Datasheet for ABIN6264986

**anti-SENP5 antibody**

## 4 Images

[Go to Product page](#)

## Overview

Quantity:	100 µL
Target:	SENP5
Reactivity:	Human, Mouse, Monkey
Host:	Rabbit
Clonality:	Polyclonal
Conjugate:	This SENP5 antibody is un-conjugated
Application:	Western Blotting (WB), ELISA, Immunohistochemistry (IHC), Immunofluorescence (IF), Immunocytochemistry (ICC)

## Product Details

Immunogen:	A synthesized peptide derived from human SENP5
Isotype:	IgG
Specificity:	SENP5 antibody detects endogenous levels of total SENP5
Cross-Reactivity:	Human, Monkey, Mouse (Murine)
Purification:	The antiserum was purified by peptide affinity chromatography using SulfoLink™ Coupling Resin (Thermo Fisher Scientific).

## Target Details

Target:	SENP5
Alternative Name:	SENP5 ( <a href="#">SENP5 Products</a> )

## Target Details

Background:	Description: Protease that catalyzes two essential functions in the SUMO pathway: processing of full-length SUMO3 to its mature form and deconjugation of SUMO2 and SUMO3 from targeted proteins. Has weak proteolytic activity against full-length SUMO1 or SUMO1 conjugates. Required for cell division. Gene: SENP5
-------------	---

Molecular Weight:	86kDa
-------------------	-------

Gene ID:	205564
----------	--------

UniProt:	<a href="#">Q96HI0</a>
----------	------------------------

## Application Details

Application Notes:	WB: 1:500~1:3000 IHC: 1:50~1:200, IF/ICC 1:100-1:500
--------------------	--

Restrictions:	For Research Use only
---------------	-----------------------

## Handling

Format:	Liquid
---------	--------

Concentration:	1 mg/mL
----------------	---------

Buffer:	Rabbit IgG in phosphate buffered saline , pH 7.4, 150 mM NaCl, 0.02 % sodium azide and 50 % glycerol.
---------	---

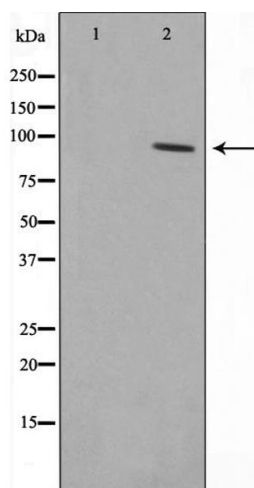
Preservative:	Sodium azide
---------------	--------------

Precaution of Use:	This product contains Sodium azide: a POISONOUS AND HAZARDOUS SUBSTANCE which should be handled by trained staff only.
--------------------	--

Storage:	-20 °C
----------	--------

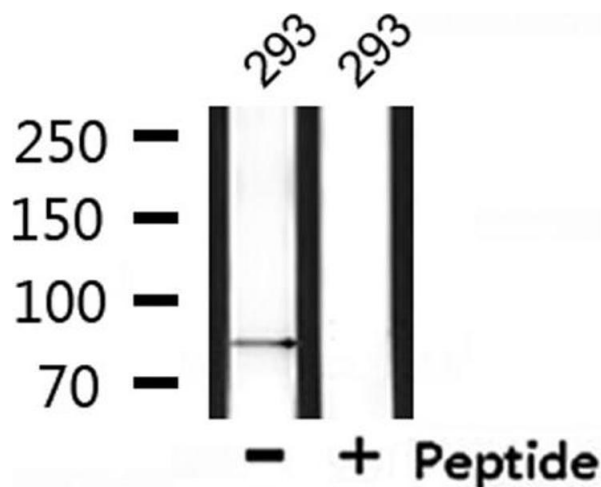
Storage Comment:	Store at -20 °C.Stable for 12 months from date of receipt
------------------	---

Expiry Date:	12 months
--------------	-----------



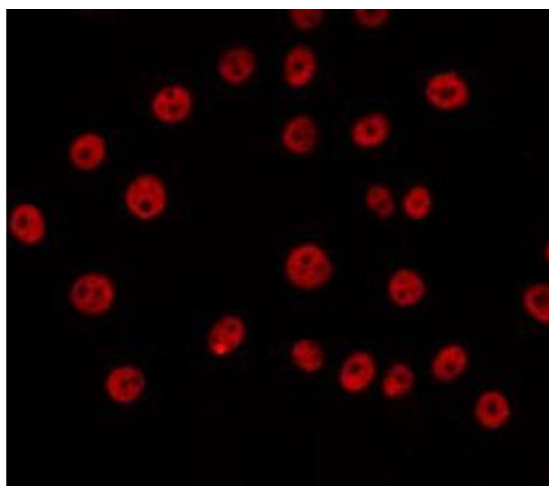
#### Western Blotting

**Image 1.** Western blot analysis on COS7 cell lysate using SENP5 Antibody. The lane on the left is treated with the antigen-specific peptide.



#### Western Blotting

**Image 2.** Western blot analysis of extracts from 293, using SENP5 Antibody.



#### Immunofluorescence (fixed cells)

**Image 3.** ABIN6266657 staining COS7 by IF/ICC. The sample were fixed with PFA and permeabilized in 0.1% Triton X-100, then blocked in 10% serum for 45 minutes at 25°C. The primary antibody was diluted at 1/200 and incubated with the sample for 1 hour at 37°C. An Alexa Fluor 594 conjugated goat anti-rabbit IgG (H+L) Ab, diluted at 1/600, was used as the secondary antibody.

Please check the [product details page](#) for more images. Overall 4 images are available for ABIN6264986.