

Datasheet for ABIN6264992  
**anti-Selenoprotein P antibody**

## 2 Images

[Go to Product page](#)

## Overview

Quantity:	100 µL
Target:	Selenoprotein P (SEPP1)
Reactivity:	Human, Rat
Host:	Rabbit
Clonality:	Polyclonal
Conjugate:	This Selenoprotein P antibody is un-conjugated
Application:	Western Blotting (WB), ELISA, Immunohistochemistry (IHC)

## Product Details

Immunogen:	A synthesized peptide derived from human SEPP1
Isotype:	IgG
Specificity:	SEPP1 Antibody detects endogenous levels of total SEPP1
Cross-Reactivity:	Human, Rat (Rattus)
Purification:	The antiserum was purified by peptide affinity chromatography using SulfoLink™ Coupling Resin (Thermo Fisher Scientific).

## Target Details

Target:	Selenoprotein P (SEPP1)
Alternative Name:	SEPP1 ( <a href="#">SEPP1 Products</a> )
Background:	Description: Might be responsible for some of the extracellular antioxidant defense properties

## Target Details

of selenium or might be involved in the transport of selenium. May supply selenium to tissues such as brain and testis.

Gene: SELENOP

Molecular Weight: 43 kDa

Gene ID: 6414

UniProt: [P49908](#)

## Application Details

Application Notes: WB 1:1000-3000 IHC 1:200

Restrictions: For Research Use only

## Handling

Format: Liquid

Concentration: 1 mg/mL

Buffer: Rabbit IgG in phosphate buffered saline , pH 7.4, 150 mM NaCl, 0.02 % sodium azide and 50 % glycerol.

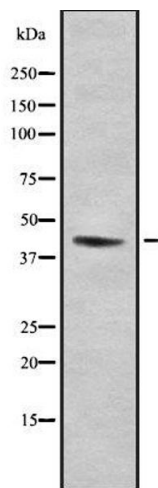
Preservative: Sodium azide

Precaution of Use: This product contains Sodium azide: a POISONOUS AND HAZARDOUS SUBSTANCE which should be handled by trained staff only.

Storage: -20 °C

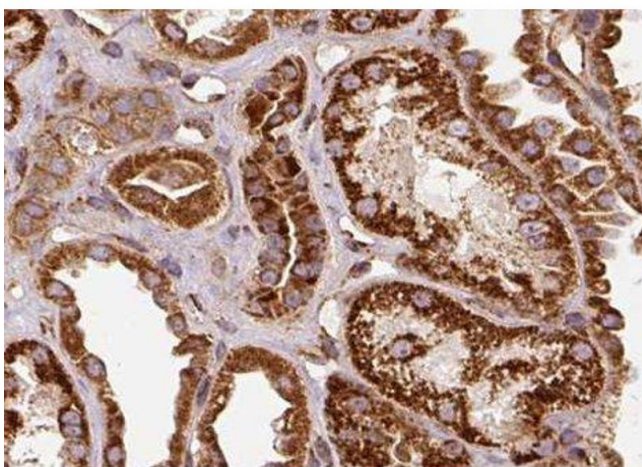
Storage Comment: Store at -20 °C.Stable for 12 months from date of receipt

Expiry Date: 12 months



### Western Blotting

**Image 1.** Western blot analysis SEPP1 using COS7 whole cell lysates



### Immunohistochemistry

**Image 2.** ABIN6278260 at 1/100 staining Human kidney tissue by IHC-P. The sample was formaldehyde fixed and a heat mediated antigen retrieval step in citrate buffer was performed. The sample was then blocked and incubated with the antibody for 1.5 hours at 22°C. An HRP conjugated goat anti-rabbit antibody was used as the secondary