



[Go to Product page](#)

Datasheet for ABIN6265009
anti-SERPINB6 antibody (N-Term)

1 Image

Overview

Quantity:	100 µL
Target:	SERPINB6
Binding Specificity:	N-Term
Reactivity:	Human, Rat, Mouse
Host:	Rabbit
Clonality:	Polyclonal
Conjugate:	This SERPINB6 antibody is un-conjugated
Application:	Western Blotting (WB), ELISA

Product Details

Immunogen:	A synthesized peptide derived from human SerpinB6, corresponding to a region within N-terminal amino acids.
Isotype:	IgG
Specificity:	SerpinB6 Antibody detects endogenous levels of total SerpinB6.
Predicted Reactivity:	Dog
Purification:	The antiserum was purified by peptide affinity chromatography using SulfoLink™ Coupling Resin (Thermo Fisher Scientific).

Target Details

Target:	SERPINB6
---------	----------

Target Details

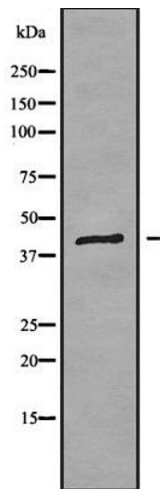
Alternative Name:	SERPINB6 (SERPINB6 Products)
Background:	<p>Description: May be involved in the regulation of serine proteinases present in the brain or extravasated from the blood (By similarity). Inhibitor of cathepsin G, kallikrein-8 and thrombin. May play an important role in the inner ear in the protection against leakage of lysosomal content during stress and loss of this protection results in cell death and sensorineural hearing loss.</p> <p>Gene: SERPINB6</p>
Molecular Weight:	43 kDa
Gene ID:	5269
UniProt:	P35237

Application Details

Application Notes:	WB 1:1000-3000, ELISA(peptide) 1:20000-1:40000
Restrictions:	For Research Use only

Handling

Format:	Liquid
Concentration:	1 mg/mL
Buffer:	Rabbit IgG in phosphate buffered saline , pH 7.4, 150 mM NaCl, 0.02 % sodium azide and 50 % glycerol.
Preservative:	Sodium azide
Precaution of Use:	This product contains Sodium azide: a POISONOUS AND HAZARDOUS SUBSTANCE which should be handled by trained staff only.
Storage:	-20 °C
Storage Comment:	Store at -20 °C. Stable for 12 months from date of receipt.
Expiry Date:	12 months



Western Blotting

Image 1. Western blot analysis SERPINB6 using K562 whole cell lysates