

Datasheet for ABIN6265013

**anti-alpha 2 Antiplasmin antibody (C-Term)****2** Images[Go to Product page](#)

## Overview

Quantity:	100 µL
Target:	alpha 2 Antiplasmin (SERPINF2)
Binding Specificity:	C-Term
Reactivity:	Human, Rat
Host:	Rabbit
Clonality:	Polyclonal
Conjugate:	This alpha 2 Antiplasmin antibody is un-conjugated
Application:	Western Blotting (WB), Immunohistochemistry (IHC), ELISA, Immunocytochemistry (ICC), Immunofluorescence (IF)

## Product Details

Immunogen:	A synthesized peptide derived from human SERPINF2, corresponding to a region within C-terminal amino acids.
Isotype:	IgG
Specificity:	SERPINF2 Antibody detects endogenous levels of total SERPINF2.
Predicted Reactivity:	Pig,Horse
Purification:	The antiserum was purified by peptide affinity chromatography using SulfoLink™ Coupling Resin (Thermo Fisher Scientific).

## Target Details

Target:	alpha 2 Antiplasmin (SERPINF2)
---------	--------------------------------

## Target Details

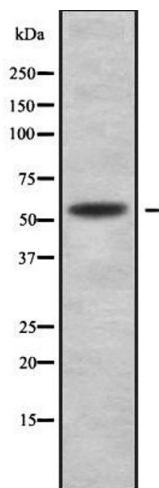
Alternative Name:	SERPINF2 ( <a href="#">SERPINF2 Products</a> )
Background:	Description: Serine protease inhibitor. The major targets of this inhibitor are plasmin and trypsin, but it also inactivates matriptase-3/TMPRSS7 and chymotrypsin. Gene: SERPINF2
Molecular Weight:	55 kDa
Gene ID:	5345
UniProt:	<a href="#">P08697</a>
Pathways:	<a href="#">Regulation of Systemic Arterial Blood Pressure by Hormones</a>

## Application Details

Application Notes:	WB 1:1000-3000, IHC 1:200, IF/ICC 1:100-1:500, ELISA(peptide) 1:20000-1:40000
Restrictions:	For Research Use only

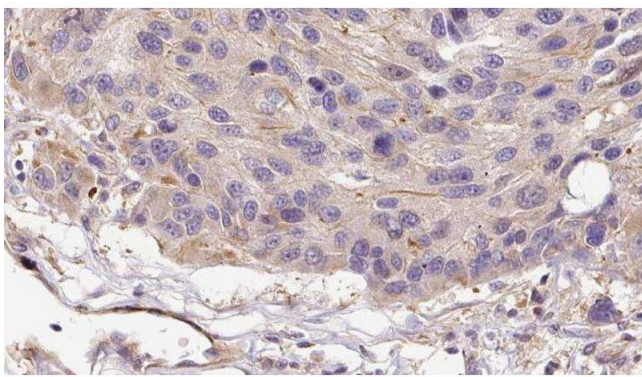
## Handling

Format:	Liquid
Concentration:	1 mg/mL
Buffer:	Rabbit IgG in phosphate buffered saline , pH 7.4, 150 mM NaCl, 0.02 % sodium azide and 50 % glycerol.
Preservative:	Sodium azide
Precaution of Use:	This product contains Sodium azide: a POISONOUS AND HAZARDOUS SUBSTANCE which should be handled by trained staff only.
Storage:	-20 °C
Storage Comment:	Store at -20 °C. Stable for 12 months from date of receipt.
Expiry Date:	12 months



### Western Blotting

**Image 1.** Western blot analysis SERPINF2 using HuvEc whole cell lysates



### Immunohistochemistry

**Image 2.** ABIN6279108 at 1/100 staining Human melanoma tissue by IHC-P. The sample was formaldehyde fixed and a heat mediated antigen retrieval step in citrate buffer was performed. The sample was then blocked and incubated with the antibody for 1.5 hours at 22°C. An HRP conjugated goat anti-rabbit antibody was used as the secondary