

Datasheet for ABIN6265105  
**anti-SKP2 antibody (C-Term)**

4 Images

1 Publication

[Go to Product page](#)

## Overview

Quantity:	100 µL
Target:	SKP2
Binding Specificity:	C-Term
Reactivity:	Human, Mouse
Host:	Rabbit
Clonality:	Polyclonal
Conjugate:	This SKP2 antibody is un-conjugated
Application:	Western Blotting (WB), ELISA, Immunohistochemistry (IHC), Immunofluorescence (IF), Immunocytochemistry (ICC)

## Product Details

Immunogen:	A synthesized peptide derived from human SKP2/p45, corresponding to a region within C-terminal amino acids.
Isotype:	IgG
Specificity:	SKP2/p45 Antibody detects endogenous levels of total SKP2/p45.
Predicted Reactivity:	Pig,Bovine,Horse,Sheep,Rabbit,Dog,Chicken
Purification:	The antiserum was purified by peptide affinity chromatography using SulfoLink™ Coupling Resin (Thermo Fisher Scientific).

## Target Details

Target:	SKP2
---------	------

## Target Details

Alternative Name:	SKP2 ( <a href="#">SKP2 Products</a> )
Background:	<p>Description: Substrate recognition component of a SCF (SKP1-CUL1-F-box protein) E3 ubiquitin-protein ligase complex which mediates the ubiquitination and subsequent proteasomal degradation of target proteins involved in cell cycle progression, signal transduction and transcription. Specifically recognizes phosphorylated CDKN1B/p27kip and is involved in regulation of G1/S transition. Degradation of CDKN1B/p27kip also requires CKS1. Recognizes target proteins ORC1, CDT1, RBL2, KMT2A/MLL1, CDK9, RAG2, FOXO1, UBP43, and probably MYC, TOB1 and TAL1. Degradation of TAL1 also requires STUB1. Recognizes CDKN1A in association with CCNE1 or CCNE2 and CDK2. Promotes ubiquitination and destruction of CDH1 in a CK1-Dependent Manner, thereby regulating cell migration.</p> <p>Gene: SKP2</p>
Molecular Weight:	47kDa
Gene ID:	6502
UniProt:	<a href="#">Q13309</a>
Pathways:	<a href="#">Mitotic G1-G1/S Phases</a>

## Application Details

Application Notes:	WB 1:500-1:2000, IHC 1:50-1:200, IF/ICC 1:100-1:500, ELISA(peptide) 1:20000-1:40000
Restrictions:	For Research Use only

## Handling

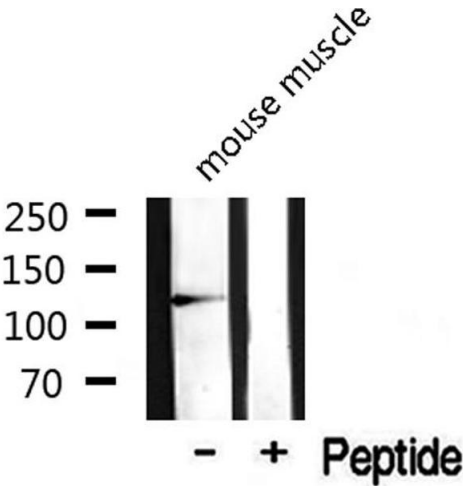
Format:	Liquid
Concentration:	1 mg/mL
Buffer:	Rabbit IgG in phosphate buffered saline , pH 7.4, 150 mM NaCl, 0.02 % sodium azide and 50 % glycerol.
Preservative:	Sodium azide
Precaution of Use:	This product contains Sodium azide: a POISONOUS AND HAZARDOUS SUBSTANCE which should be handled by trained staff only.
Storage:	-20 °C
Storage Comment:	Store at -20 °C. Stable for 12 months from date of receipt.

Expiry Date: 12 months

Publications

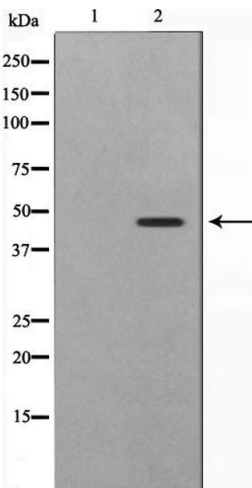
Product cited in: Zhang, Miao, Li, Cui, Ge, Chen: "S-phase kinase-associated protein 2 impairs the inhibitory effects of miR-1236-3p on bladder tumors." in: **American journal of translational research**, Vol. 10, Issue 3, pp. 731-743, (2018) ([PubMed](#)).

Images



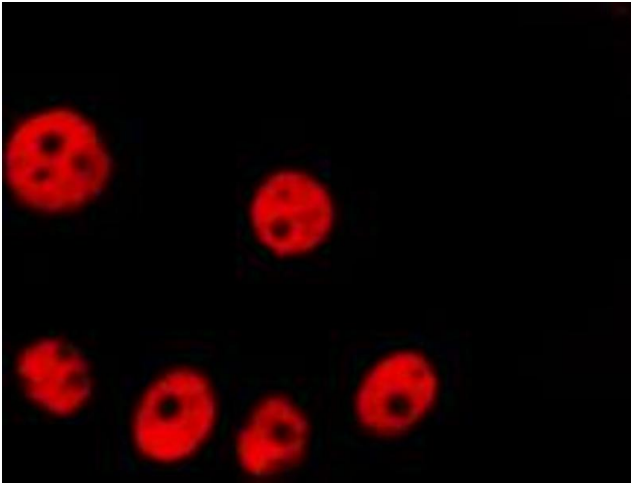
Western Blotting

**Image 1.** Western blot analysis on mouse muscle lysate using SKP2/p45 Antibody



Western Blotting

**Image 2.** Western blot analysis on 293 cell lysate using SKP2/p45 Antibody, The lane on the left is treated with the antigen-specific peptide.



#### Immunofluorescence (fixed cells)

**Image 3.** ABIN6266826 staining HeLa by IF/ICC. The sample were fixed with PFA and permeabilized in 0.1% Triton X-100, then blocked in 10% serum for 45 minutes at 25°C. The primary antibody was diluted at 1/200 and incubated with the sample for 1 hour at 37°C. An Alexa Fluor 594 conjugated goat anti-rabbit IgG (H+L) Ab, diluted at 1/600, was used as the secondary antibody.

Please check the [product details page](#) for more images. Overall 4 images are available for ABIN6265105.