

Datasheet for ABIN6265108

anti-SLC13A2 antibody**2** Images[Go to Product page](#)

Overview

Quantity:	100 µL
Target:	SLC13A2
Reactivity:	Human, Rat, Mouse
Host:	Rabbit
Clonality:	Polyclonal
Conjugate:	This SLC13A2 antibody is un-conjugated
Application:	Western Blotting (WB), Immunohistochemistry (IHC)

Product Details

Immunogen:	A synthesized peptide derived from human SLC13A2.
Isotype:	IgG
Specificity:	SLC13A2 antibody detects endogenous levels of SLC13A2.
Cross-Reactivity:	Human, Mouse (Murine), Rat (Rattus)
Purification:	The antiserum was purified by peptide affinity chromatography using SulfoLink™ Coupling Resin (Thermo Fisher Scientific).

Target Details

Target:	SLC13A2
Alternative Name:	SLC13A2 (SLC13A2 Products)
Background:	Description: Cotransport of sodium ions and dicarboxylates such as succinate and citrate.

Target Details

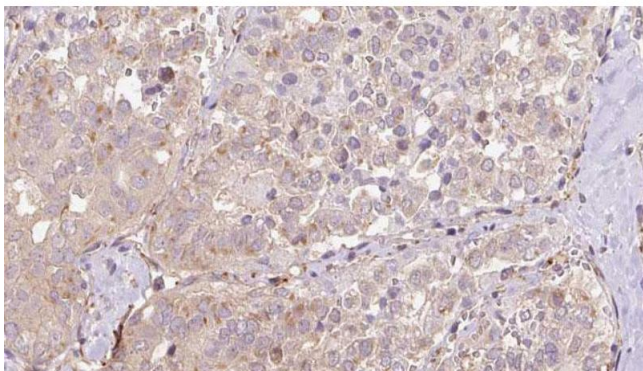
	Gene: SLC13A2
Molecular Weight:	56 kDa
Gene ID:	9058
UniProt:	Q13183

Application Details

Application Notes:	WB 1:500-1:2000, IHC 1:50-1:200
Restrictions:	For Research Use only

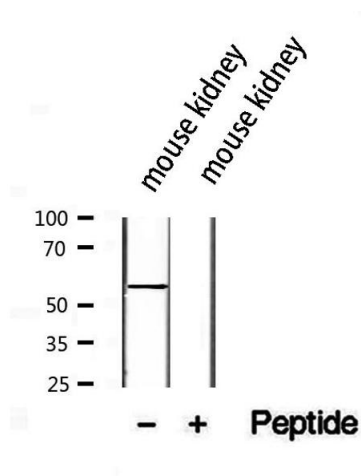
Handling

Format:	Liquid
Concentration:	1 mg/mL
Buffer:	Rabbit IgG in phosphate buffered saline , pH 7.4, 150 mM NaCl, 0.02 % sodium azide and 50 % glycerol.
Preservative:	Sodium azide
Precaution of Use:	This product contains Sodium azide: a POISONOUS AND HAZARDOUS SUBSTANCE which should be handled by trained staff only.
Storage:	-20 °C
Storage Comment:	Store at -20 °C.Stable for 12 months from date of receipt
Expiry Date:	12 months



Immunohistochemistry

Image 1. ABIN6273319 at 1/100 staining Human thyroid cancer tissue by IHC-P. The sample was formaldehyde fixed and a heat mediated antigen retrieval step in citrate buffer was performed. The sample was then blocked and incubated with the antibody for 1.5 hours at 22°C. An HRP conjugated goat anti-rabbit antibody was used as the secondary.



Western Blotting

Image 2. Western blot analysis of extracts from mouse kidney, using SLC13A2 antibody.