

Datasheet for ABIN6265111
anti-SLC1A1 antibody (C-Term)



[Go to Product page](#)

1 Image

Overview

Quantity:	100 µL
Target:	SLC1A1
Binding Specificity:	C-Term
Reactivity:	Human, Mouse
Host:	Rabbit
Clonality:	Polyclonal
Conjugate:	This SLC1A1 antibody is un-conjugated
Application:	Western Blotting (WB), ELISA

Product Details

Immunogen:	A synthesized peptide derived from human EAAT3, corresponding to a region within C-terminal amino acids.
Isotype:	IgG
Specificity:	EAAT3 Antibody detects endogenous levels of total EAAT3.
Predicted Reactivity:	Pig,Zebrafish,Bovine,Horse,Sheep,Rabbit,Dog
Purification:	The antiserum was purified by peptide affinity chromatography using SulfoLink™ Coupling Resin (Thermo Fisher Scientific).

Target Details

Target:	SLC1A1
---------	--------

Target Details

Alternative Name: SLC1A1 ([SLC1A1 Products](#))

Background: Description: Sodium-dependent, high-affinity amino acid transporter that mediates the uptake of L-glutamate and also L-aspartate and D-aspartate (PubMed:7914198, PubMed:7521911, PubMed:8857541, PubMed:26690923, PubMed:21123949). Can also transport L-cysteine (PubMed:21123949). Functions as a symporter that transports one amino acid molecule together with two or three Na⁺ ions and one proton, in parallel with the counter-transport of one K⁺ ion (PubMed:7521911, PubMed:8857541, PubMed:26690923). Mediates Cl⁻ flux that is not coupled to amino acid transport, this avoids the accumulation of negative charges due to aspartate and Na⁺ symport (PubMed:8857541, PubMed:26690923). Plays an important role in L-glutamate and L-aspartate reabsorption in renal tubuli (PubMed:21123949). Plays a redundant role in the rapid removal of released glutamate from the synaptic cleft, which is essential for terminating the postsynaptic action of glutamate (By similarity). Negatively regulated by ARL6IP5 (By similarity).

Gene: SLC1A1

Molecular Weight: 63 kDa

Gene ID: 6505

UniProt: [P43005](#)

Pathways: [Dicarboxylic Acid Transport](#)

Application Details

Application Notes: WB 1:1000-3000, ELISA(peptide) 1:20000-1:40000

Restrictions: For Research Use only

Handling

Format: Liquid

Concentration: 1 mg/mL

Buffer: Rabbit IgG in phosphate buffered saline , pH 7.4, 150 mM NaCl, 0.02 % sodium azide and 50 % glycerol.

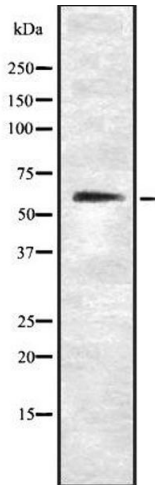
Preservative: Sodium azide

Precaution of Use: This product contains Sodium azide: a POISONOUS AND HAZARDOUS SUBSTANCE which should be handled by trained staff only.

Handling

Storage:	-20 °C
Storage Comment:	Store at -20 °C. Stable for 12 months from date of receipt.
Expiry Date:	12 months

Images



Western Blotting

Image 1. Western blot analysis SLC1A1 using NIH-3T3 whole cell lysates