

Datasheet for ABIN6265117  
**anti-SLC24A2 antibody (Internal Region)**[Go to Product page](#)

## 1 Image

## Overview

Quantity:	100 µL
Target:	SLC24A2
Binding Specificity:	Internal Region
Reactivity:	Human, Mouse, Rat
Host:	Rabbit
Clonality:	Polyclonal
Conjugate:	This SLC24A2 antibody is un-conjugated
Application:	Western Blotting (WB), ELISA, Immunohistochemistry (IHC)

## Product Details

Immunogen:	A synthesized peptide derived from human SLC24A2, corresponding to a region within the internal amino acids.
Isotype:	IgG
Specificity:	SLC24A2 Antibody detects endogenous levels of total SLC24A2.
Predicted Reactivity:	Pig,Bovine,Horse,Sheep,Rabbit,Dog,Chicken
Purification:	The antiserum was purified by peptide affinity chromatography using SulfoLink™ Coupling Resin (Thermo Fisher Scientific).

## Target Details

Target:	SLC24A2
---------	---------

## Target Details

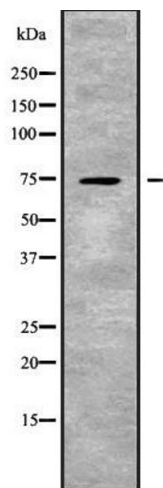
Alternative Name:	SLC24A2 ( <a href="#">SLC24A2 Products</a> )
Background:	<p>Description: Critical component of the visual transduction cascade, controlling the calcium concentration of outer segments during light and darkness. Light causes a rapid lowering of cytosolic free calcium in the outer segment of both retinal rod and cone photoreceptors and the light-induced lowering of calcium is caused by extrusion via this protein which plays a key role in the process of light adaptation. Transports 1 Ca<sup>2+</sup> and 1 K<sup>+</sup> in exchange for 4 Na<sup>+</sup>.</p> <p>Gene: SLC24A2</p>
Molecular Weight:	74 kDa
Gene ID:	25769
UniProt:	<a href="#">Q9UI40</a>

## Application Details

Application Notes:	WB 1:1000-3000, IHC 1:50-1:200, ELISA(peptide) 1:20000-1:40000
Restrictions:	For Research Use only

## Handling

Format:	Liquid
Concentration:	1 mg/mL
Buffer:	Rabbit IgG in phosphate buffered saline , pH 7.4, 150 mM NaCl, 0.02 % sodium azide and 50 % glycerol.
Preservative:	Sodium azide
Precaution of Use:	This product contains Sodium azide: a POISONOUS AND HAZARDOUS SUBSTANCE which should be handled by trained staff only.
Storage:	-20 °C
Storage Comment:	Store at -20 °C. Stable for 12 months from date of receipt.
Expiry Date:	12 months



Western Blotting

**Image 1.** Western blot analysis SLC24A2 using COLO205 whole cell lysates