

Datasheet for ABIN6265122  
**anti-SLC25A5 antibody (Internal Region)**[Go to Product page](#)

## 2 Images

## Overview

Quantity:	100 µL
Target:	SLC25A5
Binding Specificity:	Internal Region
Reactivity:	Human, Rat, Mouse
Host:	Rabbit
Clonality:	Polyclonal
Conjugate:	This SLC25A5 antibody is un-conjugated
Application:	ELISA, Western Blotting (WB)

## Product Details

Immunogen:	A synthesized peptide derived from human SLC25A5, corresponding to a region within the internal amino acids.
Isotype:	IgG
Specificity:	SLC25A5 Antibody detects endogenous levels of total SLC25A5.
Predicted Reactivity:	Pig,Zebrafish,Bovine,Horse,Sheep,Rabbit,Dog,Chicken,Xenopus
Purification:	The antiserum was purified by peptide affinity chromatography using SulfoLink™ Coupling Resin (Thermo Fisher Scientific).

## Target Details

Target:	SLC25A5
---------	---------

## Target Details

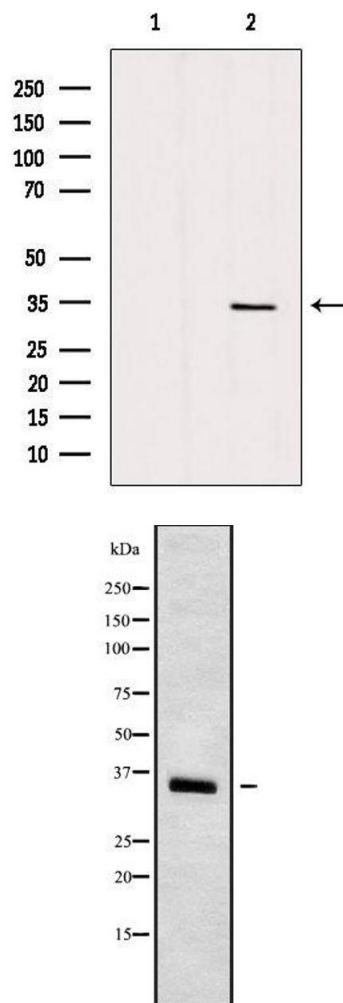
Alternative Name:	SLC25A5 ( <a href="#">SLC25A5 Products</a> )
Background:	<p>Description: Catalyzes the exchange of cytoplasmic ADP with mitochondrial ATP across the mitochondrial inner membrane. As part of the mitotic spindle-associated MMXD complex it may play a role in chromosome segregation.</p> <p>Gene: SLC25A5</p>
Molecular Weight:	33 kDa
Gene ID:	292
UniProt:	<a href="#">P05141</a>

## Application Details

Application Notes:	WB 1:1000-3000, ELISA(peptide) 1:20000-1:40000
Restrictions:	For Research Use only

## Handling

Format:	Liquid
Concentration:	1 mg/mL
Buffer:	Rabbit IgG in phosphate buffered saline , pH 7.4, 150 mM NaCl, 0.02 % sodium azide and 50 % glycerol.
Preservative:	Sodium azide
Precaution of Use:	This product contains Sodium azide: a POISONOUS AND HAZARDOUS SUBSTANCE which should be handled by trained staff only.
Storage:	-20 °C
Storage Comment:	Store at -20 °C. Stable for 12 months from date of receipt.
Expiry Date:	12 months



Western Blotting

**Image 1.** Western blot analysis of extracts from mouse brain, using SLC25A5 Antibody. Lane 1 was treated with the blocking peptide.

Western Blotting

**Image 2.** Western blot analysis SLC25A5 using COLO205 whole cell lysates