



[Go to Product page](#)

Datasheet for ABIN6265126

anti-SLC30A2 antibody (Internal Region)

1 Image

Overview

Quantity:	100 µL
Target:	SLC30A2
Binding Specificity:	Internal Region
Reactivity:	Human, Mouse
Host:	Rabbit
Clonality:	Polyclonal
Conjugate:	This SLC30A2 antibody is un-conjugated
Application:	Immunohistochemistry (IHC), ELISA, Western Blotting (WB)

Product Details

Immunogen:	A synthesized peptide derived from human SLC30A2, corresponding to a region within the internal amino acids.
Isotype:	IgG
Specificity:	SLC30A2 Antibody detects endogenous levels of total SLC30A2.
Predicted Reactivity:	Dog
Purification:	The antiserum was purified by peptide affinity chromatography using SulfoLink™ Coupling Resin (Thermo Fisher Scientific).

Target Details

Target:	SLC30A2
---------	---------

Target Details

Alternative Name: SLC30A2 ([SLC30A2 Products](#))

Background: Gene: SLC30A2

Molecular Weight: 35 kDa

Gene ID: 7780

UniProt: [Q9BRI3](#)

Application Details

Application Notes: WB 1:1000-3000, IHC 1:50-1:200, ELISA(peptide) 1:20000-1:40000

Restrictions: For Research Use only

Handling

Format: Liquid

Concentration: 1 mg/mL

Buffer: Rabbit IgG in phosphate buffered saline , pH 7.4, 150 mM NaCl, 0.02 % sodium azide and 50 % glycerol.

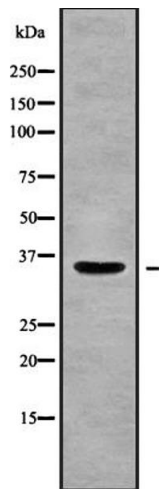
Preservative: Sodium azide

Precaution of Use: This product contains Sodium azide: a POISONOUS AND HAZARDOUS SUBSTANCE which should be handled by trained staff only.

Storage: -20 °C

Storage Comment: Store at -20 °C. Stable for 12 months from date of receipt.

Expiry Date: 12 months



Western Blotting

Image 1. Western blot analysis SLC30A2 using HUVEC whole cell lysates