



[Go to Product page](#)

Datasheet for ABIN6265135
anti-SLC4A3 antibody (N-Term)

2 Images

Overview

Quantity:	100 µL
Target:	SLC4A3
Binding Specificity:	N-Term
Reactivity:	Rat, Human, Mouse
Host:	Rabbit
Clonality:	Polyclonal
Conjugate:	This SLC4A3 antibody is un-conjugated
Application:	ELISA, Western Blotting (WB), Immunohistochemistry (IHC), Immunocytochemistry (ICC), Immunofluorescence (IF)

Product Details

Immunogen:	A synthesized peptide derived from human SLC4A3, corresponding to a region within N-terminal amino acids.
Isotype:	IgG
Specificity:	SLC4A3 Antibody detects endogenous levels of total SLC4A3.
Predicted Reactivity:	Pig,Zebrafish,Bovine,Horse,Sheep,Rabbit,Chicken
Purification:	The antiserum was purified by peptide affinity chromatography using SulfoLink™ Coupling Resin (Thermo Fisher Scientific).

Target Details

Target:	SLC4A3
---------	--------

Target Details

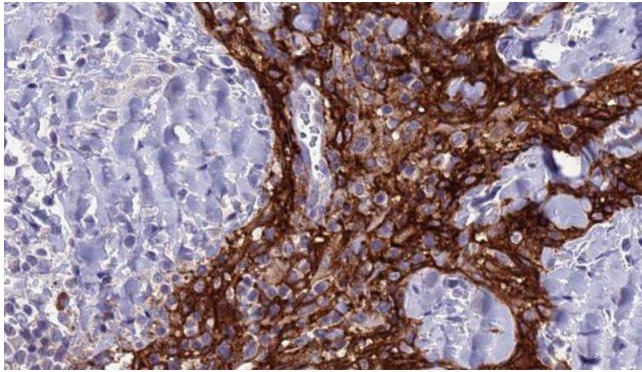
Alternative Name:	SLC4A3 (SLC4A3 Products)
Background:	Description: Plasma membrane anion exchange protein of wide distribution. Mediates at least a part of the Cl ⁻ /HCO ₃ ⁻ exchange in cardiac myocytes. Both BAE3 and CAE3 forms transport Cl ⁻ . Gene: SLC4A3
Molecular Weight:	136kDa
Gene ID:	6508
UniProt:	P48751

Application Details

Application Notes:	WB 1:1000-3000, IHC 1:50-1:200, IF/ICC 1:100-1:500, ELISA(peptide) 1:20000-1:40000
Restrictions:	For Research Use only

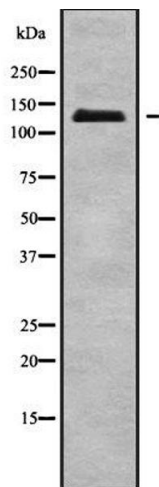
Handling

Format:	Liquid
Concentration:	1 mg/mL
Buffer:	Rabbit IgG in phosphate buffered saline , pH 7.4, 150 mM NaCl, 0.02 % sodium azide and 50 % glycerol.
Preservative:	Sodium azide
Precaution of Use:	This product contains Sodium azide: a POISONOUS AND HAZARDOUS SUBSTANCE which should be handled by trained staff only.
Storage:	-20 °C
Storage Comment:	Store at -20 °C. Stable for 12 months from date of receipt.
Expiry Date:	12 months



Immunohistochemistry

Image 1. ABIN6279127 at 1/100 staining Human Head and neck cancer tissue by IHC-P. The sample was formaldehyde fixed and a heat mediated antigen retrieval step in citrate buffer was performed. The sample was then blocked and incubated with the antibody for 1.5 hours at 22°C. An HRP conjugated goat anti-rabbit antibody was used as the secondary



Western Blotting

Image 2. Western blot analysis SLC4A3 using NIH-3T3 whole cell lysates