

Datasheet for ABIN6265136
anti-SLC4A4 antibody (C-Term)[Go to Product page](#)

2 Images

Overview

Quantity:	100 µL
Target:	SLC4A4
Binding Specificity:	C-Term
Reactivity:	Human, Rat, Mouse
Host:	Rabbit
Clonality:	Polyclonal
Conjugate:	This SLC4A4 antibody is un-conjugated
Application:	ELISA, Western Blotting (WB), Immunohistochemistry (IHC)

Product Details

Immunogen:	A synthesized peptide derived from human SLC4A4, corresponding to a region within C-terminal amino acids.
Isotype:	IgG
Specificity:	SLC4A4 Antibody detects endogenous levels of total SLC4A4.
Predicted Reactivity:	Pig,Bovine,Rabbit,Dog,Chicken,Xenopus
Purification:	The antiserum was purified by peptide affinity chromatography using SulfoLink™ Coupling Resin (Thermo Fisher Scientific).

Target Details

Target:	SLC4A4
---------	--------

Target Details

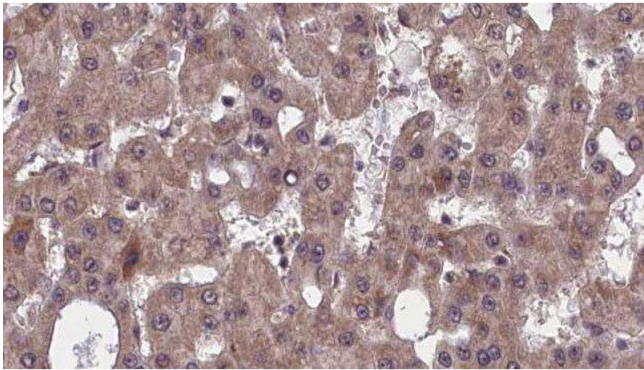
Alternative Name:	SLC4A4 (SLC4A4 Products)
Background:	Description: Electrogenic sodium/bicarbonate cotransporter with a Na ⁺ :HCO ₃ ⁻ stoichiometry varying from 1:2 to 1:3. May regulate bicarbonate influx/efflux at the basolateral membrane of cells and regulate intracellular pH . Gene: SLC4A4
Molecular Weight:	121kDa
Gene ID:	8671
UniProt:	Q9Y6R1

Application Details

Application Notes:	WB 1:500-1:2000, IHC 1:50-1:200, ELISA(peptide) 1:20000-1:40000
Restrictions:	For Research Use only

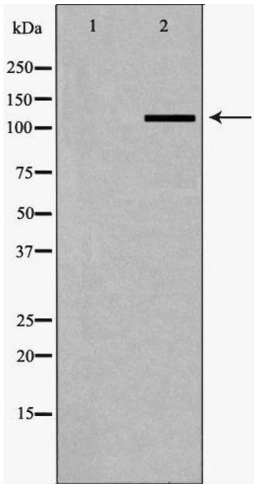
Handling

Format:	Liquid
Concentration:	1 mg/mL
Buffer:	Rabbit IgG in phosphate buffered saline , pH 7.4, 150 mM NaCl, 0.02 % sodium azide and 50 % glycerol.
Preservative:	Sodium azide
Precaution of Use:	This product contains Sodium azide: a POISONOUS AND HAZARDOUS SUBSTANCE which should be handled by trained staff only.
Storage:	-20 °C
Storage Comment:	Store at -20 °C. Stable for 12 months from date of receipt.
Expiry Date:	12 months



Immunohistochemistry

Image 1. ABIN6277524 at 1/100 staining Human liver cancer tissue by IHC-P. The sample was formaldehyde fixed and a heat mediated antigen retrieval step in citrate buffer was performed. The sample was then blocked and incubated with the antibody for 1.5 hours at 22°C. An HRP conjugated goat anti-rabbit antibody was used as the secondary



Western Blotting

Image 2. Western blot analysis of A549 whole cell lysates, using SLC4A4 Antibody. The lane on the left is treated with the antigen-specific peptide.