

Datasheet for ABIN6265138

anti-SLC4A9 antibody

2 Images

[Go to Product page](#)

Overview

Quantity:	100 µL
Target:	SLC4A9
Reactivity:	Human, Mouse
Host:	Rabbit
Clonality:	Polyclonal
Conjugate:	This SLC4A9 antibody is un-conjugated
Application:	ELISA, Western Blotting (WB), Immunohistochemistry (IHC)

Product Details

Immunogen:	A synthesized peptide derived from human SLC4A9
Isotype:	IgG
Specificity:	SLC4A9 Antibody detects endogenous levels of total SLC4A9
Cross-Reactivity:	Human, Mouse (Murine)
Purification:	The antiserum was purified by peptide affinity chromatography using SulfoLink™ Coupling Resin (Thermo Fisher Scientific).

Target Details

Target:	SLC4A9
Alternative Name:	SLC4A9 (SLC4A9 Products)
Background:	Description: Probable apical anion exchanger of the kidney cortex.

Target Details

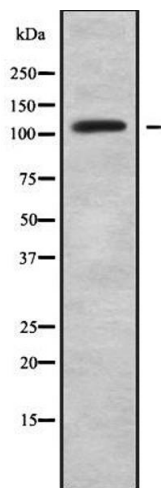
	Gene: SLC4A9
Molecular Weight:	108kDa
Gene ID:	83697
UniProt:	Q96Q91

Application Details

Application Notes:	WB 1:1000-3000 IHC 1:200
Restrictions:	For Research Use only

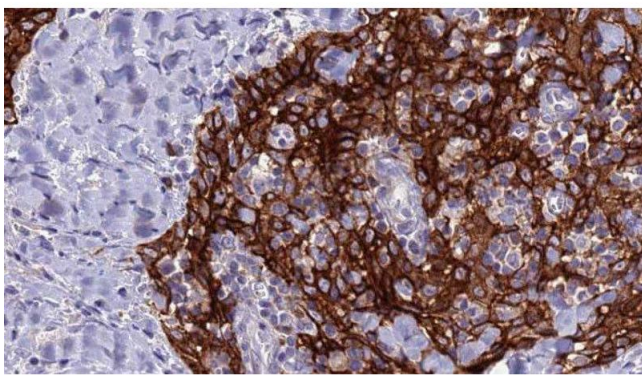
Handling

Format:	Liquid
Concentration:	1 mg/mL
Buffer:	Rabbit IgG in phosphate buffered saline , pH 7.4, 150 mM NaCl, 0.02 % sodium azide and 50 % glycerol.
Preservative:	Sodium azide
Precaution of Use:	This product contains Sodium azide: a POISONOUS AND HAZARDOUS SUBSTANCE which should be handled by trained staff only.
Storage:	-20 °C
Storage Comment:	Store at -20 °C.Stable for 12 months from date of receipt
Expiry Date:	12 months



Western Blotting

Image 1. Western blot analysis SLC4A9 using COS7 whole cell lysates



Immunohistochemistry

Image 2. ABIN6279128 at 1/100 staining Human Head and neck cancer tissue by IHC-P. The sample was formaldehyde fixed and a heat mediated antigen retrieval step in citrate buffer was performed. The sample was then blocked and incubated with the antibody for 1.5 hours at 22°C. An HRP conjugated goat anti-rabbit antibody was used as the secondary