



[Go to Product page](#)

Datasheet for ABIN6265141

## anti-SLC6A12 antibody (C-Term)

### 1 Image

#### Overview

Quantity:	100 µL
Target:	SLC6A12
Binding Specificity:	C-Term
Reactivity:	Human, Mouse
Host:	Rabbit
Clonality:	Polyclonal
Conjugate:	This SLC6A12 antibody is un-conjugated
Application:	Western Blotting (WB), ELISA

#### Product Details

Immunogen:	A synthesized peptide derived from human SLC6A12, corresponding to a region within C-terminal amino acids.
Isotype:	IgG
Specificity:	SLC6A12 Antibody detects endogenous levels of total SLC6A12.
Purification:	The antiserum was purified by peptide affinity chromatography using SulfoLink™ Coupling Resin (Thermo Fisher Scientific).

#### Target Details

Target:	SLC6A12
Alternative Name:	SLC6A12 ( <a href="#">SLC6A12 Products</a> )

## Target Details

---

Background:	Description: Transports betaine and GABA. May have a role in regulation of GABAergic transmission in the brain through the reuptake of GABA into presynaptic terminals, as well as in osmotic regulation. Gene: SLC6A12
Molecular Weight:	69kDa
Gene ID:	6539
UniProt:	<a href="#">P48065</a>

## Application Details

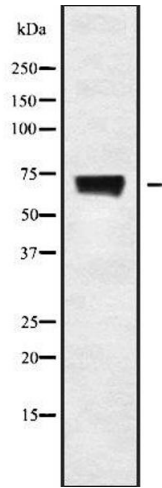
---

Application Notes:	WB 1:1000-3000, ELISA(peptide) 1:20000-1:40000
Restrictions:	For Research Use only

## Handling

---

Format:	Liquid
Concentration:	1 mg/mL
Buffer:	Rabbit IgG in phosphate buffered saline , pH 7.4, 150 mM NaCl, 0.02 % sodium azide and 50 % glycerol.
Preservative:	Sodium azide
Precaution of Use:	This product contains Sodium azide: a POISONOUS AND HAZARDOUS SUBSTANCE which should be handled by trained staff only.
Storage:	-20 °C
Storage Comment:	Store at -20 °C. Stable for 12 months from date of receipt.
Expiry Date:	12 months



### Western Blotting

**Image 1.** Western blot analysis SLC6A12 using NIH-3T3 whole cell lysates