

Datasheet for ABIN6265144
anti-SLC6A17 antibody (Internal Region)[Go to Product page](#)

2 Images

Overview

Quantity:	100 µL
Target:	SLC6A17
Binding Specificity:	Internal Region
Reactivity:	Human, Mouse, Rat
Host:	Rabbit
Clonality:	Polyclonal
Conjugate:	This SLC6A17 antibody is un-conjugated
Application:	Western Blotting (WB), ELISA, Immunohistochemistry (IHC)

Product Details

Immunogen:	A synthesized peptide derived from human SLC6A17, corresponding to a region within the internal amino acids.
Isotype:	IgG
Specificity:	SLC6A17 Antibody detects endogenous levels of total SLC6A17.
Predicted Reactivity:	Pig,Bovine,Horse,Sheep,Rabbit,Dog,Chicken
Purification:	The antiserum was purified by peptide affinity chromatography using SulfoLink™ Coupling Resin (Thermo Fisher Scientific).

Target Details

Target:	SLC6A17
---------	---------

Target Details

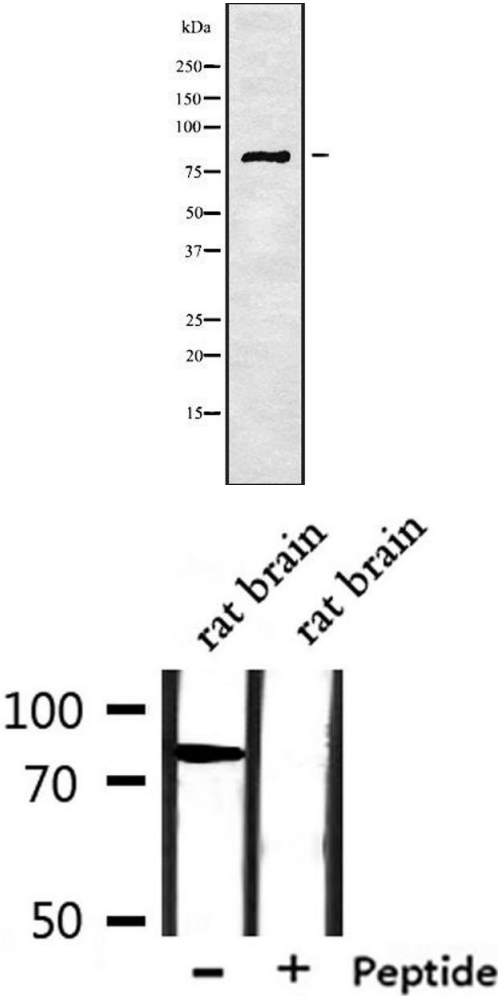
Alternative Name:	SLC6A17 (SLC6A17 Products)
Background:	Description: Functions as a sodium-dependent vesicular transporter selective for proline, glycine, leucine and alanine. In contrast to other members of this neurotransmitter transporter family, does not appear to be chloride-dependent (By similarity). Gene: SLC6A17
Molecular Weight:	81 kDa
Gene ID:	388662
UniProt:	Q9H1V8

Application Details

Application Notes:	WB 1:1000-3000, IHC 1:50-1:200, ELISA(peptide) 1:20000-1:40000
Restrictions:	For Research Use only

Handling

Format:	Liquid
Concentration:	1 mg/mL
Buffer:	Rabbit IgG in phosphate buffered saline , pH 7.4, 150 mM NaCl, 0.02 % sodium azide and 50 % glycerol.
Preservative:	Sodium azide
Precaution of Use:	This product contains Sodium azide: a POISONOUS AND HAZARDOUS SUBSTANCE which should be handled by trained staff only.
Storage:	-20 °C
Storage Comment:	Store at -20 °C. Stable for 12 months from date of receipt.
Expiry Date:	12 months



Western Blotting

Image 1. Western blot analysis SLC6A17 using K562 whole cell lysates

Western Blotting

Image 2. Western blot analysis of extracts from rat brain, using SLC6A17 Antibody.