

Datasheet for ABIN6265146
anti-SLC6A20 antibody (Internal Region)[Go to Product page](#)

3 Images

Overview

Quantity:	100 µL
Target:	SLC6A20
Binding Specificity:	Internal Region
Reactivity:	Human, Mouse, Rat
Host:	Rabbit
Clonality:	Polyclonal
Conjugate:	This SLC6A20 antibody is un-conjugated
Application:	Western Blotting (WB), ELISA, Immunohistochemistry (IHC)

Product Details

Immunogen:	A synthesized peptide derived from human SLC6A20, corresponding to a region within the internal amino acids.
Isotype:	IgG
Specificity:	SLC6A20 Antibody detects endogenous levels of total SLC6A20.
Predicted Reactivity:	Pig,Bovine,Horse,Sheep,Rabbit,Dog
Purification:	The antiserum was purified by peptide affinity chromatography using SulfoLink™ Coupling Resin (Thermo Fisher Scientific).

Target Details

Target:	SLC6A20
---------	---------

Target Details

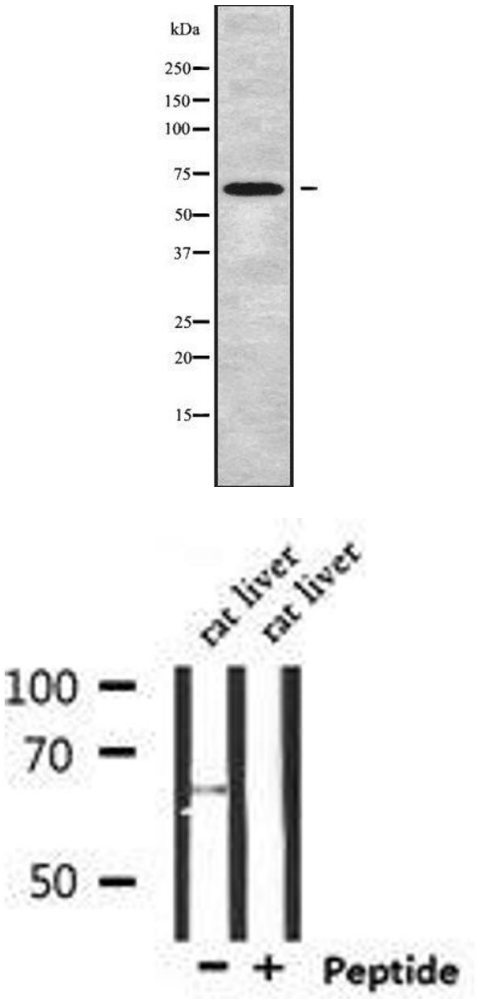
Alternative Name:	SLC6A20 (SLC6A20 Products)
Background:	Description: Mediates the calcium-dependent uptake of imino acids such as L-proline, N-methyl-L-proline and pipecolate as well as N-methylated amino acids. Involved in the transport of glycine. Gene: SLC6A20
Molecular Weight:	66 kDa
Gene ID:	54716
UniProt:	Q9NP91

Application Details

Application Notes:	WB 1:1000-3000, IHC 1:200, ELISA(peptide) 1:20000-1:40000
Restrictions:	For Research Use only

Handling

Format:	Liquid
Concentration:	1 mg/mL
Buffer:	Rabbit IgG in phosphate buffered saline , pH 7.4, 150 mM NaCl, 0.02 % sodium azide and 50 % glycerol.
Preservative:	Sodium azide
Precaution of Use:	This product contains Sodium azide: a POISONOUS AND HAZARDOUS SUBSTANCE which should be handled by trained staff only.
Storage:	-20 °C
Storage Comment:	Store at -20 °C. Stable for 12 months from date of receipt.
Expiry Date:	12 months

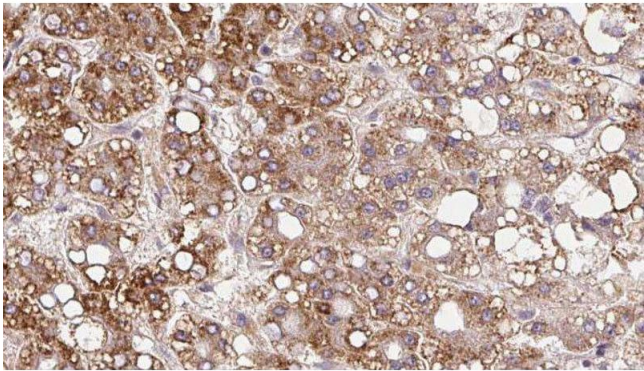


Western Blotting

Image 1. Western blot analysis SLC6A20 using K562 whole cell lysates

Western Blotting

Image 2. Western blot analysis of extracts from rat liver, using SLC6A20 Antibody.



Immunohistochemistry

Image 3. ABIN6279837 at 1/100 staining Human liver cancer tissue by IHC-P. The sample was formaldehyde fixed and a heat mediated antigen retrieval step in citrate buffer was performed. The sample was then blocked and incubated with the antibody for 1.5 hours at 22°C. An HRP conjugated goat anti-rabbit antibody was used as the secondary