

Datasheet for ABIN6265152
anti-SLC9A10 antibody (Internal Region)[Go to Product page](#)

1 Image

Overview

Quantity:	100 µL
Target:	SLC9A10 (SLC9C1)
Binding Specificity:	Internal Region
Reactivity:	Human, Mouse
Host:	Rabbit
Clonality:	Polyclonal
Conjugate:	This SLC9A10 antibody is un-conjugated
Application:	Western Blotting (WB), ELISA, Immunohistochemistry (IHC)

Product Details

Immunogen:	A synthesized peptide derived from human SLC9A10, corresponding to a region within the internal amino acids.
Isotype:	IgG
Specificity:	SLC9A10 Antibody detects endogenous levels of total SLC9A10.
Predicted Reactivity:	Bovine,Horse,Sheep,Rabbit,Dog
Purification:	The antiserum was purified by peptide affinity chromatography using SulfoLink™ Coupling Resin (Thermo Fisher Scientific).

Target Details

Target:	SLC9A10 (SLC9C1)
---------	------------------

Target Details

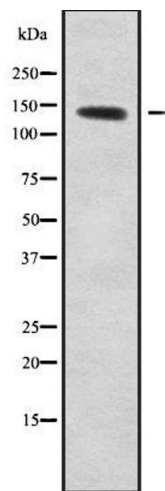
Alternative Name:	SLC9C1 (SLC9C1 Products)
Background:	<p>Description: Sperm-specific sodium/hydrogen exchanger involved in intracellular pH regulation of spermatozoa. Required for sperm motility and fertility. Involved in sperm cell hyperactivation, a step needed for sperm motility which is essential late in the preparation of sperm for fertilization. Required for the expression and bicarbonate regulation of the soluble adenylyl cyclase (sAC) (By similarity).</p> <p>Gene: SLC9C1</p>
Molecular Weight:	135kDa
Gene ID:	285335
UniProt:	Q4G0N8

Application Details

Application Notes:	WB 1:1000-3000, IHC 1:50-1:200, ELISA(peptide) 1:20000-1:40000
Restrictions:	For Research Use only

Handling

Format:	Liquid
Concentration:	1 mg/mL
Buffer:	Rabbit IgG in phosphate buffered saline , pH 7.4, 150 mM NaCl, 0.02 % sodium azide and 50 % glycerol.
Preservative:	Sodium azide
Precaution of Use:	This product contains Sodium azide: a POISONOUS AND HAZARDOUS SUBSTANCE which should be handled by trained staff only.
Storage:	-20 °C
Storage Comment:	Store at -20 °C. Stable for 12 months from date of receipt.
Expiry Date:	12 months



Western Blotting

Image 1. Western blot analysis SLC9A10 using HepG2 whole cell lysates