



[Go to Product page](#)

Datasheet for ABIN6265155

anti-SLC9A3 antibody (Internal Region)

1 Image

Overview

Quantity:	100 µL
Target:	SLC9A3
Binding Specificity:	Internal Region
Reactivity:	Rat, Human, Mouse
Host:	Rabbit
Clonality:	Polyclonal
Conjugate:	This SLC9A3 antibody is un-conjugated
Application:	Western Blotting (WB), ELISA

Product Details

Immunogen:	A synthesized peptide derived from human NHE-3, corresponding to a region within the internal amino acids.
Isotype:	IgG
Specificity:	NHE-3 Antibody detects endogenous levels of total NHE-3.
Predicted Reactivity:	Pig,Bovine,Horse,Sheep,Rabbit,Dog,Chicken
Purification:	The antiserum was purified by peptide affinity chromatography using SulfoLink™ Coupling Resin (Thermo Fisher Scientific).

Target Details

Target:	SLC9A3
---------	--------

Target Details

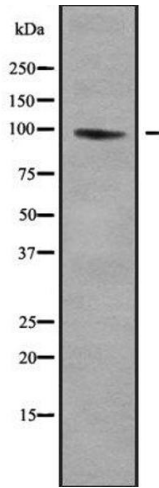
Alternative Name:	SLC9A3 (SLC9A3 Products)
Background:	Description: Involved in pH regulation to eliminate acids generated by active metabolism or to counter adverse environmental conditions. Major proton extruding system driven by the inward sodium ion chemical gradient (PubMed:26358773). Plays an important role in signal transduction. Gene: SLC9A3
Molecular Weight:	93kDa
Gene ID:	6550
UniProt:	P48764
Pathways:	Proton Transport

Application Details

Application Notes:	WB 1:1000-3000, ELISA(peptide) 1:20000-1:40000
Restrictions:	For Research Use only

Handling

Format:	Liquid
Concentration:	1 mg/mL
Buffer:	Rabbit IgG in phosphate buffered saline , pH 7.4, 150 mM NaCl, 0.02 % sodium azide and 50 % glycerol.
Preservative:	Sodium azide
Precaution of Use:	This product contains Sodium azide: a POISONOUS AND HAZARDOUS SUBSTANCE which should be handled by trained staff only.
Storage:	-20 °C
Storage Comment:	Store at -20 °C. Stable for 12 months from date of receipt.
Expiry Date:	12 months



Western Blotting

Image 1. Western blot analysis SLC9A3 using COLO205 whole cell lysates