



[Go to Product page](#)

Datasheet for ABIN6265156
anti-SLC9A3R1 antibody (Internal Region)

3 Images

Overview

Quantity:	100 µL
Target:	SLC9A3R1
Binding Specificity:	Internal Region
Reactivity:	Human, Rat, Mouse
Host:	Rabbit
Clonality:	Polyclonal
Conjugate:	This SLC9A3R1 antibody is un-conjugated
Application:	Western Blotting (WB), ELISA, Immunohistochemistry (IHC)

Product Details

Immunogen:	A synthesized peptide derived from human EBP50, corresponding to a region within the internal amino acids.
Isotype:	IgG
Specificity:	EBP50 Antibody detects endogenous levels of total EBP50.
Predicted Reactivity:	Bovine,Horse,Sheep,Rabbit,Dog
Purification:	The antiserum was purified by peptide affinity chromatography using SulfoLink™ Coupling Resin (Thermo Fisher Scientific).

Target Details

Target:	SLC9A3R1
---------	----------

Target Details

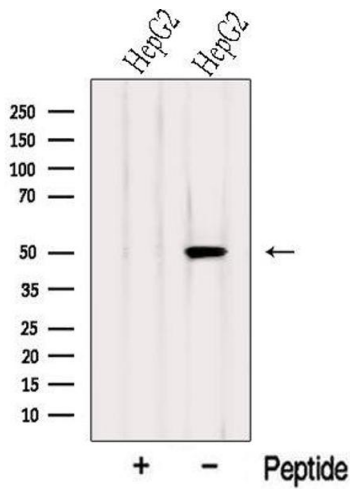
Alternative Name:	SLC9A3R1 (SLC9A3R1 Products)
Background:	<p>Description: Scaffold protein that connects plasma membrane proteins with members of the ezrin/moesin/radixin family and thereby helps to link them to the actin cytoskeleton and to regulate their surface expression. Necessary for recycling of internalized ADRB2. Was first known to play a role in the regulation of the activity and subcellular location of SLC9A3. Necessary for cAMP-mediated phosphorylation and inhibition of SLC9A3. May enhance Wnt signaling. May participate in HTR4 targeting to microvilli (By similarity). Involved in the regulation of phosphate reabsorption in the renal proximal tubules. Involved in sperm capacitation. May participate in the regulation of the chloride and bicarbonate homeostasis in spermatozoa.</p> <p>Gene: SLC9A3R1</p>
Molecular Weight:	39 kDa
Gene ID:	9368
UniProt:	O14745
Pathways:	Proton Transport , Platelet-derived growth Factor Receptor Signaling , Negative Regulation of Transporter Activity , SARS-CoV-2 Protein Interactome

Application Details

Application Notes:	WB 1:1000-3000, IHC 1:200, ELISA(peptide) 1:20000-1:40000
Restrictions:	For Research Use only

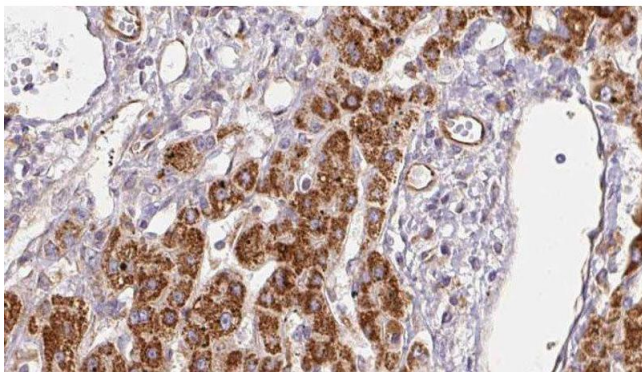
Handling

Format:	Liquid
Concentration:	1 mg/mL
Buffer:	Rabbit IgG in phosphate buffered saline , pH 7.4, 150 mM NaCl, 0.02 % sodium azide and 50 % glycerol.
Preservative:	Sodium azide
Precaution of Use:	This product contains Sodium azide: a POISONOUS AND HAZARDOUS SUBSTANCE which should be handled by trained staff only.
Storage:	-20 °C
Storage Comment:	Store at -20 °C. Stable for 12 months from date of receipt.



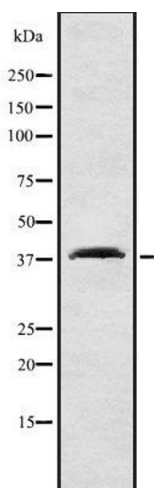
Western Blotting

Image 1. Western blot analysis of extracts from HepG2 cells, using SLC9A3R1 Antibody. The lane on the left was treated with blocking peptide.



Immunohistochemistry

Image 2. ABIN6278272 at 1/100 staining Human liver cancer tissue by IHC-P. The sample was formaldehyde fixed and a heat mediated antigen retrieval step in citrate buffer was performed. The sample was then blocked and incubated with the antibody for 1.5 hours at 22°C. An HRP conjugated goat anti-rabbit antibody was used as the secondary



Western Blotting

Image 3. Western blot analysis SLC9A3R1 using COLO205 whole cell lysates