

Datasheet for ABIN6265216

**anti-SOCS2 antibody**[Go to Product page](#)

## 4 Images

## Overview

Quantity:	100 µL
Target:	SOCS2
Reactivity:	Human, Rat, Mouse
Host:	Rabbit
Clonality:	Polyclonal
Conjugate:	This SOCS2 antibody is un-conjugated
Application:	Western Blotting (WB), ELISA, Immunocytochemistry (ICC), Immunofluorescence (IF)

## Product Details

Immunogen:	A synthesized peptide derived from human SOCS2
Isotype:	IgG
Specificity:	SOCS2 Antibody detects endogenous levels of total SOCS2
Cross-Reactivity:	Human, Mouse (Murine), Rat (Rattus)
Purification:	The antiserum was purified by peptide affinity chromatography using SulfoLink™ Coupling Resin (Thermo Fisher Scientific).

## Target Details

Target:	SOCS2
Alternative Name:	SOCS2 ( <a href="#">SOCS2 Products</a> )
Background:	Description: SOCS family proteins form part of a classical negative feedback system that

## Target Details

regulates cytokine signal transduction. SOCS2 appears to be a negative regulator in the growth hormone/IGF1 signaling pathway. Probable substrate recognition component of a SCF-like ECS (Elongin BC-CUL2/5-SOCS-box protein) E3 ubiquitin-protein ligase complex which mediates the ubiquitination and subsequent proteasomal degradation of target proteins.

Gene: SOCS2

Molecular Weight: 23 kDa

Gene ID: 8835

UniProt: [O14508](#)

Pathways: [JAK-STAT Signaling](#), [Response to Growth Hormone Stimulus](#)

## Application Details

Application Notes: WB 1:1000-3000 IF/ICC 1:200-1:500

Restrictions: For Research Use only

## Handling

Format: Liquid

Concentration: 1 mg/mL

Buffer: Rabbit IgG in phosphate buffered saline , pH 7.4, 150 mM NaCl, 0.02 % sodium azide and 50 % glycerol.

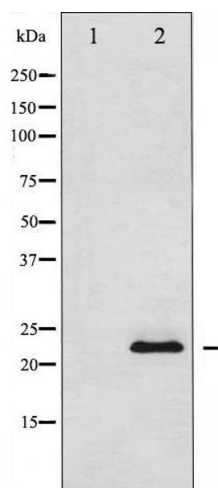
Preservative: Sodium azide

Precaution of Use: This product contains Sodium azide: a POISONOUS AND HAZARDOUS SUBSTANCE which should be handled by trained staff only.

Storage: -20 °C

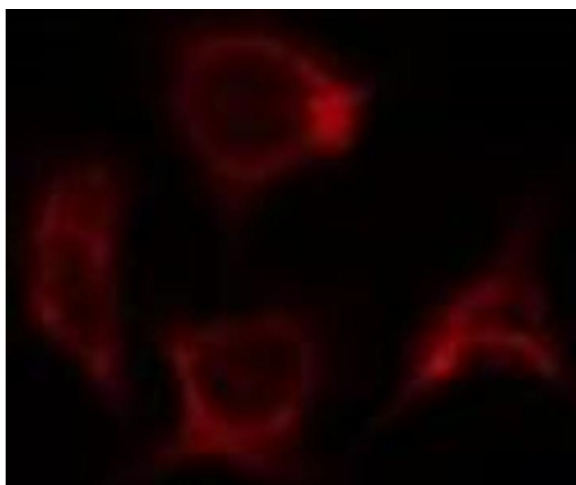
Storage Comment: Store at -20 °C.Stable for 12 months from date of receipt

Expiry Date: 12 months



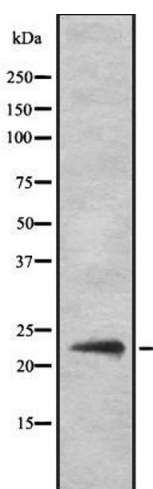
#### Western Blotting

**Image 1.** Western blot analysis SOCS2 using COS7 whole cell lysates



#### Immunofluorescence (fixed cells)

**Image 2.** ABIN6278180 staining 293T by IF/ICC. The sample were fixed with PFA and permeabilized in 0.1% Triton X-100, then blocked in 10% serum for 45 minutes at 25°C. The primary antibody was diluted at 1/200 and incubated with the sample for 1 hour at 37°C. An Alexa Fluor 594 conjugated goat anti-rabbit IgG (H+L) Ab, diluted at 1/600, was used as the secondary antibody



#### Western Blotting

**Image 3.** Western blot analysis of SOCS2 Antibody expression in Hela cells lysates.

Please check the [product details page](#) for more images. Overall 4 images are available for ABIN6265216.