

Datasheet for ABIN6265242

anti-SOX9 antibody

4 Images



[Go to Product page](#)

Overview

Quantity:	100 µL
Target:	SOX9
Reactivity:	Human, Mouse
Host:	Rabbit
Clonality:	Polyclonal
Conjugate:	This SOX9 antibody is un-conjugated
Application:	Western Blotting (WB), ELISA, Immunohistochemistry (IHC), Immunofluorescence (IF), Immunoprecipitation (IP), Immunocytochemistry (ICC)

Product Details

Immunogen:	A synthesized peptide derived from human SOX9
Isotype:	IgG
Specificity:	SOX9 Antibody detects endogenous levels of total SOX9
Cross-Reactivity:	Human, Mouse (Murine)
Purification:	The antiserum was purified by peptide affinity chromatography using SulfoLink™ Coupling Resin (Thermo Fisher Scientific).

Target Details

Target:	SOX9
Alternative Name:	SOX9 (SOX9 Products)

Target Details

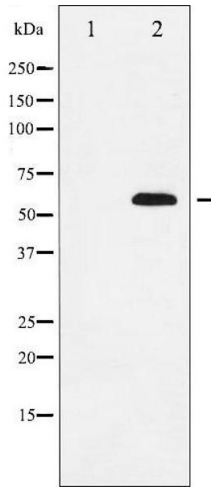
Background:	Description: Transcriptional regulator (PubMed:24038782). Binds to the COL2A1 promoter and activates COL2A1 expression, as part of a complex with ZNF219 (By similarity). Plays a role in chondrocyte differentiation (By similarity). Important for normal skeletal development (PubMed:24038782). Gene: SOX9
Molecular Weight:	56kDa
Gene ID:	6662
UniProt:	P48436
Pathways:	EGFR Signaling Pathway , Stem Cell Maintenance , Regulation of Muscle Cell Differentiation , Tube Formation , Skeletal Muscle Fiber Development

Application Details

Application Notes:	WB 1:500-1:2000 IHC 1:50-1:200 IF/ICC 1:100-1:500 ip 1/200
Restrictions:	For Research Use only

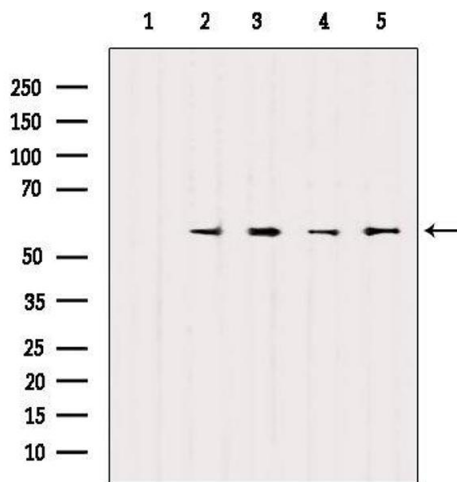
Handling

Format:	Liquid
Concentration:	1 mg/mL
Buffer:	Rabbit IgG in phosphate buffered saline , pH 7.4, 150 mM NaCl, 0.02 % sodium azide and 50 % glycerol.
Preservative:	Sodium azide
Precaution of Use:	This product contains Sodium azide: a POISONOUS AND HAZARDOUS SUBSTANCE which should be handled by trained staff only.
Storage:	-20 °C
Storage Comment:	Store at -20 °C.Stable for 12 months from date of receipt
Expiry Date:	12 months



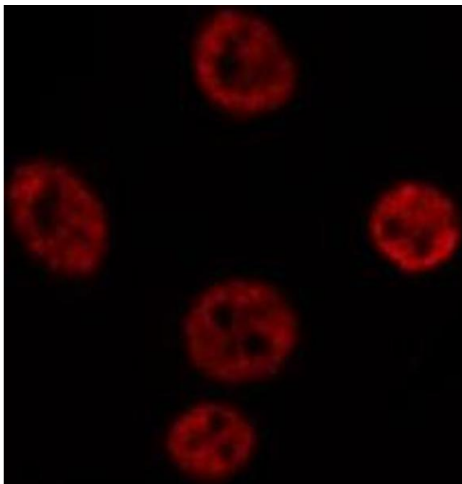
Western Blotting

Image 1. Western blot analysis of SOX9 expression in NIH-3T3 whole cell lysates, The lane on the left is treated with the antigen-specific peptide.



Western Blotting

Image 2. Western blot analysis of extracts from various samples, using SOX9 Antibody. Lane 1: COS-7 treated with blocking peptide; Lane 2: COS-7; Lane 3: HeLa; Lane 4: B16F10; Lane 5: HepG2.



Immunofluorescence (fixed cells)

Image 3. ABIN6269269 staining Hep G2 cells by IF/ICC. The sample were fixed with PFA and permeabilized in 0.1% Triton X-100, then blocked in 10% serum for 45 minutes at 25°C. The primary antibody was diluted at 1/200 and incubated with the sample for 1 hour at 37°C. An Alexa Fluor 594 conjugated goat anti-rabbit IgG (H+L) antibody (Cat.# S0006), diluted at 1/600, was used as secondary antibody

Please check the [product details page](#) for more images. Overall 4 images are available for ABIN6265242.