

Datasheet for ABIN6265252  
**anti-SPAM1 antibody (Internal Region)**



[Go to Product page](#)

3 Images

### Overview

Quantity:	100 µL
Target:	SPAM1
Binding Specificity:	Internal Region
Reactivity:	Human, Mouse, Rat
Host:	Rabbit
Clonality:	Polyclonal
Conjugate:	This SPAM1 antibody is un-conjugated
Application:	Western Blotting (WB), ELISA, Immunohistochemistry (IHC)

### Product Details

Immunogen:	A synthesized peptide derived from human SPAM1, corresponding to a region within the internal amino acids.
Isotype:	IgG
Specificity:	SPAM1 Antibody detects endogenous levels of total SPAM1.
Purification:	The antiserum was purified by peptide affinity chromatography using SulfoLink™ Coupling Resin (Thermo Fisher Scientific).

### Target Details

Target:	SPAM1
Alternative Name:	SPAM1 ( <a href="#">SPAM1 Products</a> )

## Target Details

---

Background: Description: Involved in sperm-egg adhesion. Upon fertilization sperm must first penetrate a layer of cumulus cells that surrounds the egg before reaching the zona pellucida. The cumulus cells are embedded in a matrix containing hyaluronic acid which is formed prior to ovulation. This protein aids in penetrating the layer of cumulus cells by digesting hyaluronic acid.  
Gene: SPAM1

Molecular Weight: 58kDa

Gene ID: 6677

UniProt: [P38567](#)

## Application Details

---

Application Notes: WB 1:500-1:2000, IHC 1:50-1:200, ELISA(peptide) 1:20000-1:40000

Restrictions: For Research Use only

## Handling

---

Format: Liquid

Concentration: 1 mg/mL

Buffer: Rabbit IgG in phosphate buffered saline , pH 7.4, 150 mM NaCl, 0.02 % sodium azide and 50 % glycerol.

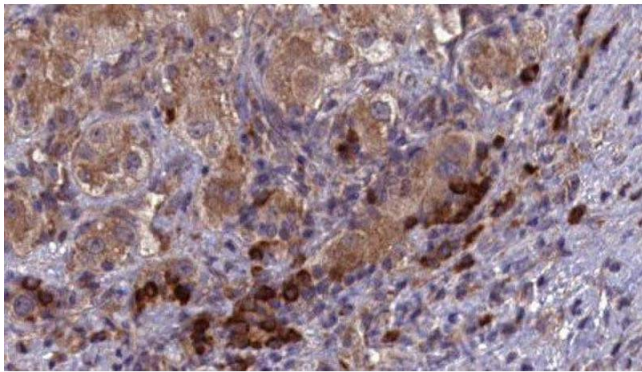
Preservative: Sodium azide

Precaution of Use: This product contains Sodium azide: a POISONOUS AND HAZARDOUS SUBSTANCE which should be handled by trained staff only.

Storage: -20 °C

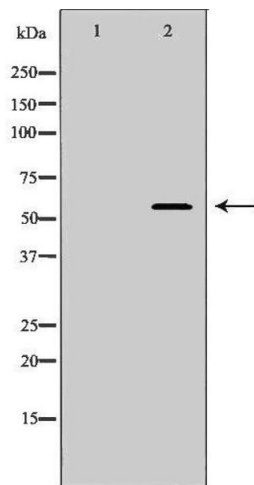
Storage Comment: Store at -20 °C. Stable for 12 months from date of receipt.

Expiry Date: 12 months



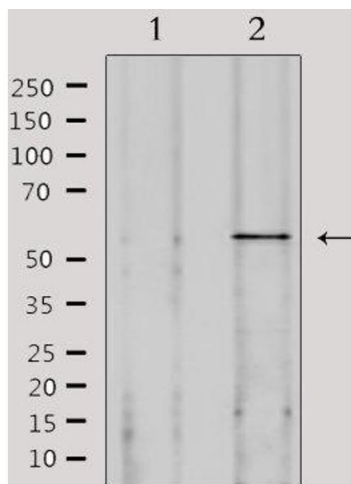
### Immunohistochemistry

**Image 1.** ABIN6277103 at 1/100 staining Human liver cancer tissue by IHC-P. The sample was formaldehyde fixed and a heat mediated antigen retrieval step in citrate buffer was performed. The sample was then blocked and incubated with the antibody for 1.5 hours at 22°C. An HRP conjugated goat anti-rabbit antibody was used as the secondary



### Western Blotting

**Image 2.** Western blot analysis of extracts of PC-3, using SPAM antibody. The lane on the left is treated with the antigen-specific peptide.



### Western Blotting

**Image 3.** Western blot analysis of extracts from 293, using SPAM1 Antibody. Lane 1 was treated with the antigen-specific peptide.