

Datasheet for ABIN6265260  
**anti-SPINK1 antibody (Internal Region)**[Go to Product page](#)

## 3 Images

## Overview

Quantity:	100 µL
Target:	SPINK1
Binding Specificity:	Internal Region
Reactivity:	Human, Rat, Mouse
Host:	Rabbit
Clonality:	Polyclonal
Conjugate:	This SPINK1 antibody is un-conjugated
Application:	Western Blotting (WB), ELISA, Immunohistochemistry (IHC), Immunofluorescence (IF), Immunocytochemistry (ICC)

## Product Details

Immunogen:	A synthesized peptide derived from human SPINK1, corresponding to a region within the internal amino acids.
Isotype:	IgG
Specificity:	SPINK1 Antibody detects endogenous levels of total SPINK1.
Predicted Reactivity:	Horse
Purification:	The antiserum was purified by peptide affinity chromatography using SulfoLink™ Coupling Resin (Thermo Fisher Scientific).

## Target Details

Target:	SPINK1
---------	--------

## Target Details

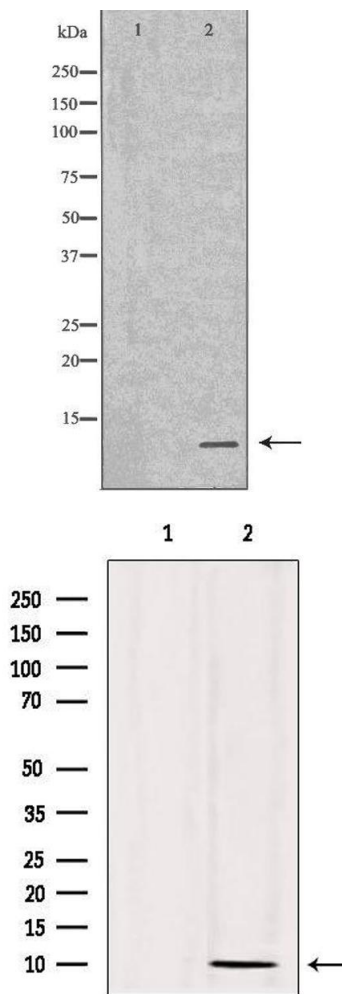
Alternative Name:	SPINK1 ( <a href="#">SPINK1 Products</a> )
Background:	Description: Serine protease inhibitor which exhibits anti-trypsin activity (PubMed:7142173). In the pancreas, protects against trypsin-catalyzed premature activation of zymogens (By similarity). Gene: SPINK1
Molecular Weight:	9kDa
Gene ID:	6690
UniProt:	<a href="#">P00995</a>

## Application Details

Application Notes:	WB 1:500-1:2000, IHC 1:50-1:200, IF/ICC 1:100-1:500, ELISA(peptide) 1:20000-1:40000
Restrictions:	For Research Use only

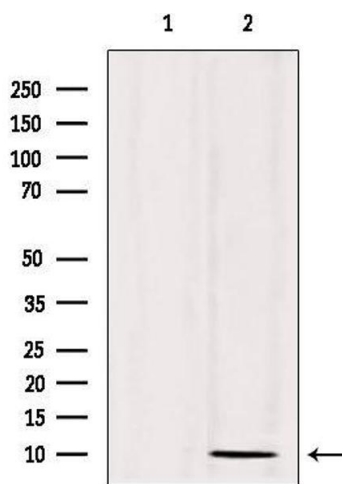
## Handling

Format:	Liquid
Concentration:	1 mg/mL
Buffer:	Rabbit IgG in phosphate buffered saline , pH 7.4, 150 mM NaCl, 0.02 % sodium azide and 50 % glycerol.
Preservative:	Sodium azide
Precaution of Use:	This product contains Sodium azide: a POISONOUS AND HAZARDOUS SUBSTANCE which should be handled by trained staff only.
Storage:	-20 °C
Storage Comment:	Store at -20 °C. Stable for 12 months from date of receipt.
Expiry Date:	12 months



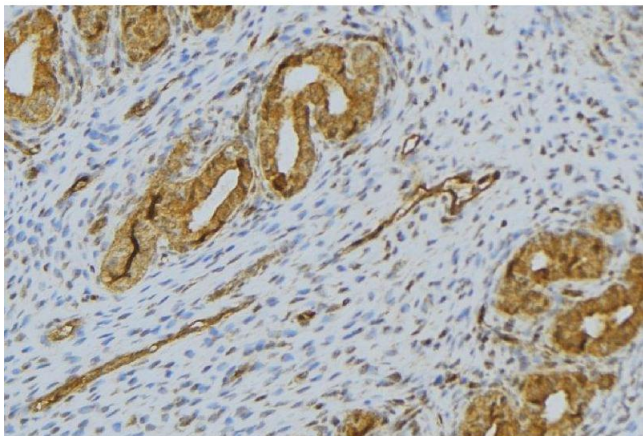
#### Western Blotting

**Image 1.** Western blot analysis of GST-SPINK1 recombinant protein using SPINK1 antibody. The lane on the left is treated with the antigen-specific peptide.



#### Western Blotting

**Image 2.** Western blot analysis of extracts from 293, using SPINK1 Antibody. Lane 1 was treated with the blocking peptide.



#### Immunohistochemistry

**Image 3.** ABIN6276508 at 1/100 staining Human uterus tissue by IHC-P. The sample was formaldehyde fixed and a heat mediated antigen retrieval step in citrate buffer was performed. The sample was then blocked and incubated with the antibody for 1.5 hours at 22°C. An HRP conjugated goat anti-rabbit antibody was used as the secondary