

Datasheet for ABIN6265271  
**anti-SQLE antibody (C-Term)**

## 3 Images

[Go to Product page](#)

## Overview

Quantity:	100 µL
Target:	SQLE
Binding Specificity:	C-Term
Reactivity:	Human, Mouse, Rat
Host:	Rabbit
Clonality:	Polyclonal
Conjugate:	This SQLE antibody is un-conjugated
Application:	Western Blotting (WB), Immunohistochemistry (IHC)

## Product Details

Immunogen:	A synthesized peptide derived from human SQLE, corresponding to a region within C-terminal amino acids.
Isotype:	IgG
Specificity:	SQLE Antibody detects endogenous levels of total SQLE.
Predicted Reactivity:	Pig,Bovine,Horse,Sheep,Rabbit,Dog,Chicken,Xenopus
Purification:	The antiserum was purified by peptide affinity chromatography using SulfoLink™ Coupling Resin (Thermo Fisher Scientific).

## Target Details

Target:	SQLE
---------	------

## Target Details

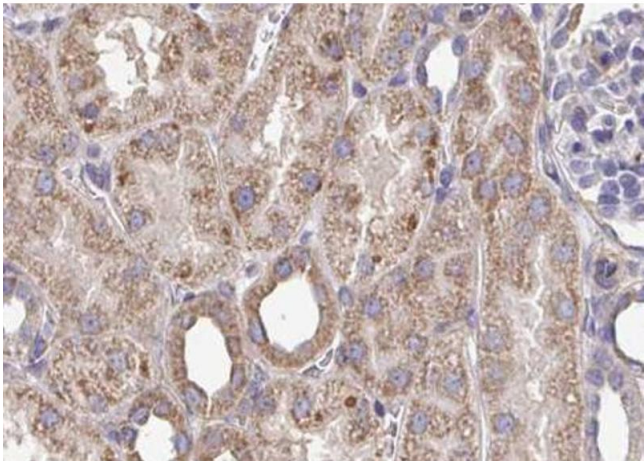
Alternative Name:	SQLE ( <a href="#">SQLE Products</a> )
Background:	Description: Catalyzes the first oxygenation step in sterol biosynthesis and is suggested to be one of the rate-limiting enzymes in this pathway. Gene: SQLE
Molecular Weight:	64 kDa
Gene ID:	6713
UniProt:	<a href="#">Q14534</a>

## Application Details

Application Notes:	WB 1:500-1:2000, IHC 1:50-1:200
Restrictions:	For Research Use only

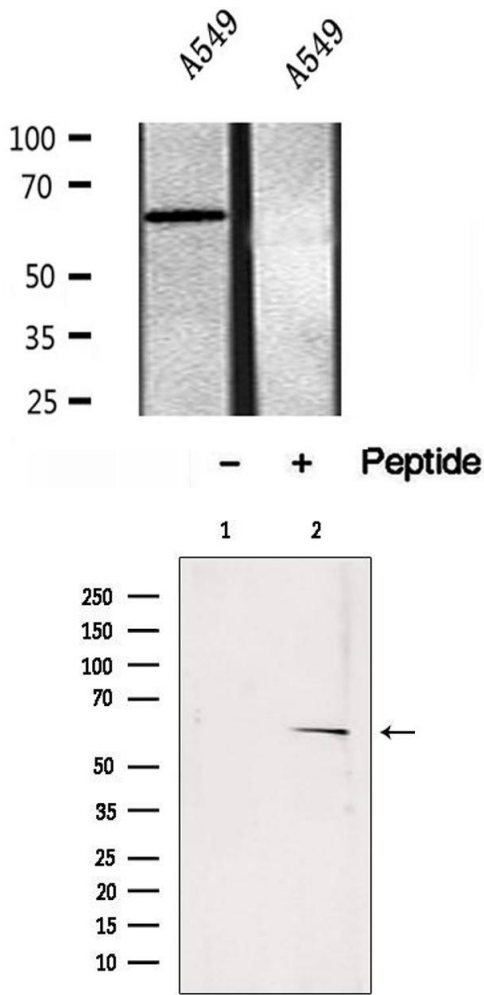
## Handling

Format:	Liquid
Concentration:	1 mg/mL
Buffer:	Rabbit IgG in phosphate buffered saline , pH 7.4, 150 mM NaCl, 0.02 % sodium azide and 50 % glycerol.
Preservative:	Sodium azide
Precaution of Use:	This product contains Sodium azide: a POISONOUS AND HAZARDOUS SUBSTANCE which should be handled by trained staff only.
Storage:	-20 °C
Storage Comment:	Store at -20 °C. Stable for 12 months from date of receipt.
Expiry Date:	12 months



**Immunohistochemistry**

**Image 1.** ABIN6272907 at 1/100 staining Mouse kidney tissue by IHC-P. The sample was formaldehyde fixed and a heat mediated antigen retrieval step in citrate buffer was performed. The sample was then blocked and incubated with the antibody for 1.5 hours at 22°C. An HRP conjugated goat anti-rabbit antibody was used as the secondary.



**Western Blotting**

**Image 2.** Western blot analysis of extracts of A549 cells, using SQLE antibody.

**Western Blotting**

**Image 3.** Western blot analysis of extracts from rat muscle, using SQLE antibody. Lane 1 was treated with the blocking peptide.