



[Go to Product page](#)

Datasheet for ABIN6265330
anti-STBD1 antibody (N-Term)

3 Images

Overview

Quantity:	100 µL
Target:	STBD1
Binding Specificity:	N-Term
Reactivity:	Human, Mouse
Host:	Rabbit
Clonality:	Polyclonal
Conjugate:	This STBD1 antibody is un-conjugated
Application:	Western Blotting (WB), Immunocytochemistry (ICC), Immunofluorescence (IF), Immunohistochemistry (IHC)

Product Details

Immunogen:	A synthesized peptide derived from human STBD1, corresponding to a region within N-terminal amino acids.
Isotype:	IgG
Specificity:	STBD1 Antibody detects endogenous levels of total STBD1.
Purification:	The antiserum was purified by peptide affinity chromatography using SulfoLink™ Coupling Resin (Thermo Fisher Scientific).

Target Details

Target:	STBD1
Alternative Name:	STBD1 (STBD1 Products)

Target Details

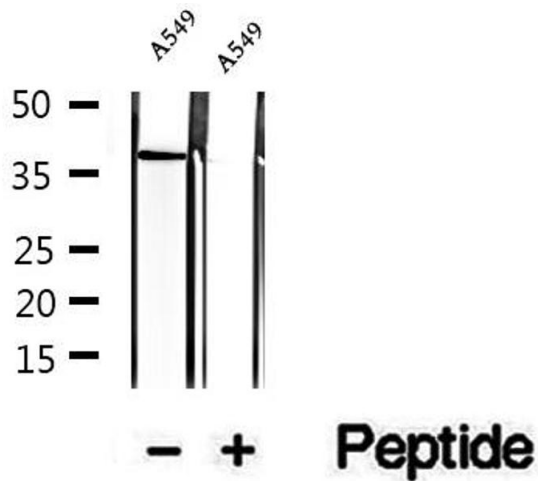
Background:	Description: Acts as a cargo receptor for glycogen. Delivers its cargo to an autophagic pathway called glycophagy, resulting in the transport of glycogen to lysosomes. Gene: STBD1
Molecular Weight:	35-43 kDa
Gene ID:	8987
UniProt:	O95210

Application Details

Application Notes:	WB 1:500-1:2000, IHC 1:50-1:200, IF/ICC 1:100-1:500
Restrictions:	For Research Use only

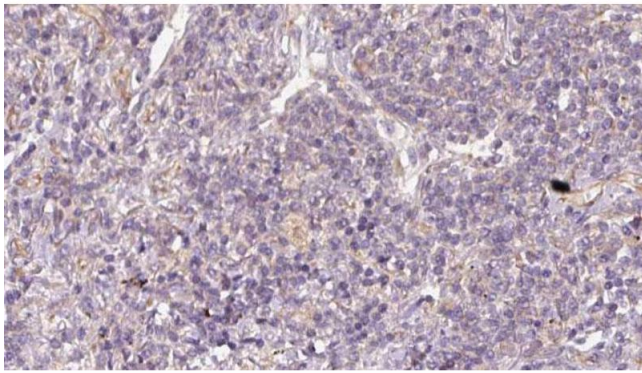
Handling

Format:	Liquid
Concentration:	1 mg/mL
Buffer:	Rabbit IgG in phosphate buffered saline , pH 7.4, 150 mM NaCl, 0.02 % sodium azide and 50 % glycerol.
Preservative:	Sodium azide
Precaution of Use:	This product contains Sodium azide: a POISONOUS AND HAZARDOUS SUBSTANCE which should be handled by trained staff only.
Storage:	-20 °C
Storage Comment:	Store at -20 °C. Stable for 12 months from date of receipt.
Expiry Date:	12 months



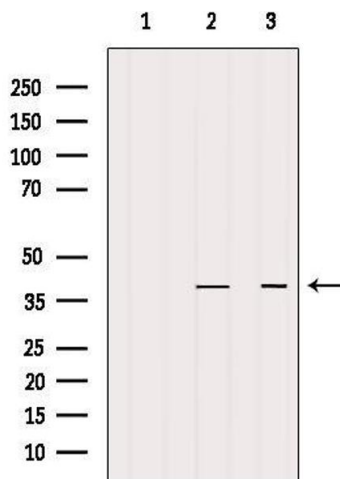
Western Blotting

Image 1. Western blot analysis of extracts of A549 cells, using STBD1 antibody.



Immunohistochemistry

Image 2. ABIN6273170 at 1/100 staining Human lymph cancer tissue by IHC-P. The sample was formaldehyde fixed and a heat mediated antigen retrieval step in citrate buffer was performed. The sample was then blocked and incubated with the antibody for 1.5 hours at 22°C. An HRP conjugated goat anti-rabbit antibody was used as the secondary.



Western Blotting

Image 3. Western blot analysis of extracts from various samples, using STBD1 Antibody. Lane 1: Mouse brain treated with blocking peptide; Lane 2: Mouse brain; Lane 3: Mouse spleen.