

Datasheet for ABIN6265341

anti-STK25 antibody[Go to Product page](#)**1** Image

Overview

Quantity:	100 µL
Target:	STK25
Reactivity:	Human, Mouse, Rat
Host:	Rabbit
Clonality:	Polyclonal
Conjugate:	This STK25 antibody is un-conjugated
Application:	Western Blotting (WB), ELISA

Product Details

Immunogen:	A synthesized peptide derived from human STK25
Isotype:	IgG
Specificity:	STK25 Antibody detects endogenous levels of total STK25
Cross-Reactivity:	Human, Mouse (Murine), Rat (Rattus)
Purification:	The antiserum was purified by peptide affinity chromatography using SulfoLink™ Coupling Resin (Thermo Fisher Scientific).

Target Details

Target:	STK25
Alternative Name:	STK25 (STK25 Products)
Background:	Description: Oxidant stress-activated serine/threonine kinase that may play a role in the

Target Details

response to environmental stress. Targets to the Golgi apparatus where it appears to regulate protein transport events, cell adhesion, and polarity complexes important for cell migration.

Gene: STK25

Molecular Weight: 48 kDa

Gene ID: 10494

UniProt: [O00506](#)

Application Details

Application Notes: WB 1:1000-3000

Restrictions: For Research Use only

Handling

Format: Liquid

Concentration: 1 mg/mL

Buffer: Rabbit IgG in phosphate buffered saline , pH 7.4, 150 mM NaCl, 0.02 % sodium azide and 50 % glycerol.

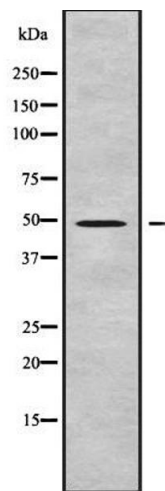
Preservative: Sodium azide

Precaution of Use: This product contains Sodium azide: a POISONOUS AND HAZARDOUS SUBSTANCE which should be handled by trained staff only.

Storage: -20 °C

Storage Comment: Store at -20 °C.Stable for 12 months from date of receipt

Expiry Date: 12 months



Western Blotting

Image 1. Western blot analysis STK25 using COS7 whole cell lysates