

Datasheet for ABIN6265350
anti-STRADA antibody (Internal Region)[Go to Product page](#)

2 Images

Overview

| | |
|----------------------|--|
| Quantity: | 100 µL |
| Target: | STRADA |
| Binding Specificity: | Internal Region |
| Reactivity: | Human, Mouse, Rat |
| Host: | Rabbit |
| Clonality: | Polyclonal |
| Conjugate: | This STRADA antibody is un-conjugated |
| Application: | Western Blotting (WB), ELISA, Immunofluorescence (IF), Immunocytochemistry (ICC) |

Product Details

| | |
|-----------------------|---|
| Immunogen: | A synthesized peptide derived from human STRAD, corresponding to a region within the internal amino acids. |
| Isotype: | IgG |
| Specificity: | STRAD Antibody detects endogenous levels of total STRAD. |
| Predicted Reactivity: | Pig,Bovine,Horse,Sheep,Rabbit,Dog |
| Purification: | The antiserum was purified by peptide affinity chromatography using SulfoLink™ Coupling Resin (Thermo Fisher Scientific). |

Target Details

| | |
|---------|--------|
| Target: | STRADA |
|---------|--------|

Target Details

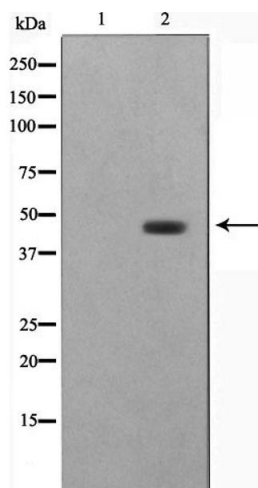
| | |
|-------------------|--|
| Alternative Name: | STRADA (STRADA Products) |
| Background: | <p>Description: Pseudokinase which, in complex with CAB39/MO25 (CAB39/MO25alpha or CAB39L/MO25beta), binds to and activates STK11/LKB1. Adopts a closed conformation typical of active protein kinases and binds STK11/LKB1 as a pseudosubstrate, promoting conformational change of STK11/LKB1 in an active conformation.</p> <p>Gene: STRADA</p> |
| Molecular Weight: | 46kDa |
| Gene ID: | 92335 |
| UniProt: | Q7RTN6 |
| Pathways: | AMPK Signaling |

Application Details

| | |
|--------------------|---|
| Application Notes: | WB 1:500-1:2000, IF/ICC 1:100-1:500, ELISA(peptide) 1:20000-1:40000 |
| Restrictions: | For Research Use only |

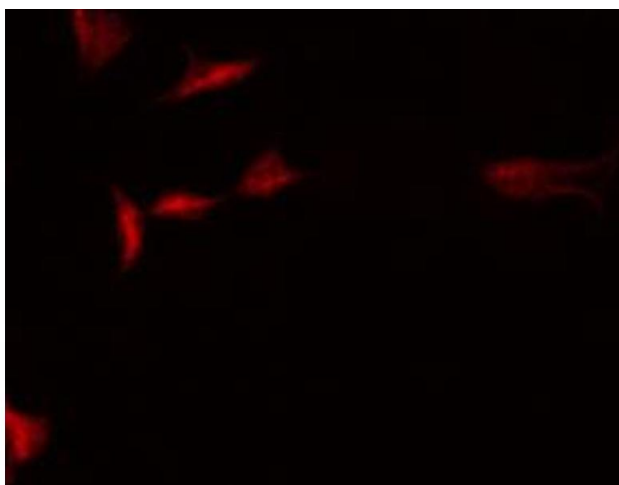
Handling

| | |
|--------------------|--|
| Format: | Liquid |
| Concentration: | 1 mg/mL |
| Buffer: | Rabbit IgG in phosphate buffered saline , pH 7.4, 150 mM NaCl, 0.02 % sodium azide and 50 % glycerol. |
| Preservative: | Sodium azide |
| Precaution of Use: | This product contains Sodium azide: a POISONOUS AND HAZARDOUS SUBSTANCE which should be handled by trained staff only. |
| Storage: | -20 °C |
| Storage Comment: | Store at -20 °C. Stable for 12 months from date of receipt. |
| Expiry Date: | 12 months |



Western Blotting

Image 1. Western blot analysis on HepG2 cell lysate using STRAD Antibody, The lane on the left is treated with the antigen-specific peptide.



Immunofluorescence (fixed cells)

Image 2. ABIN6266871 staining HepG2 by IF/ICC. The sample were fixed with PFA and permeabilized in 0.1% Triton X-100, then blocked in 10% serum for 45 minutes at 25°C. The primary antibody was diluted at 1/200 and incubated with the sample for 1 hour at 37°C. An Alexa Fluor 594 conjugated goat anti-rabbit IgG (H+L) Ab, diluted at 1/600, was used as the secondary antibody.