

Datasheet for ABIN6265370
anti-SULT1E1 antibody (Internal Region)

3 Images

[Go to Product page](#)

Overview

Quantity:	100 µL
Target:	SULT1E1
Binding Specificity:	Internal Region
Reactivity:	Human, Rat, Mouse
Host:	Rabbit
Clonality:	Polyclonal
Conjugate:	This SULT1E1 antibody is un-conjugated
Application:	Western Blotting (WB), Immunohistochemistry (IHC), Immunofluorescence (IF), Immunocytochemistry (ICC)

Product Details

Immunogen:	A synthesized peptide derived from human Estrogen Sulfotransferase, corresponding to a region within the internal amino acids.
Isotype:	IgG
Specificity:	Estrogen Sulfotransferase Antibody detects endogenous levels of total Estrogen Sulfotransferase.
Predicted Reactivity:	Pig,Horse,Rabbit
Purification:	The antiserum was purified by peptide affinity chromatography using SulfoLink™ Coupling Resin (Thermo Fisher Scientific).

Target Details

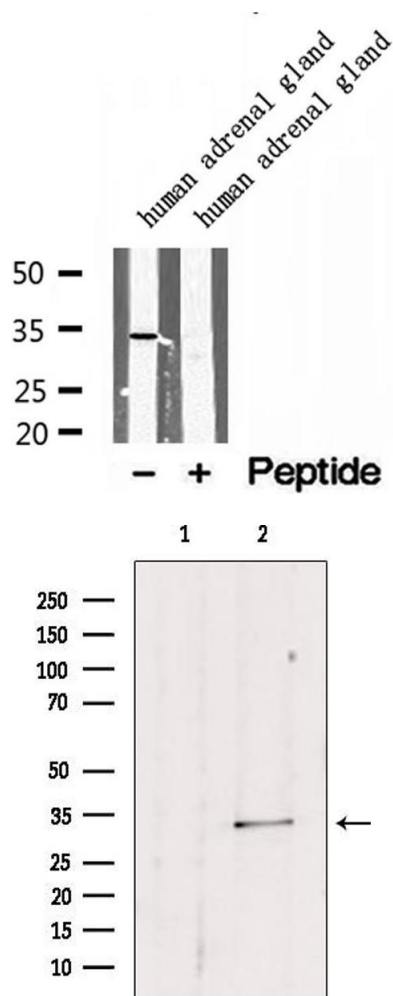
Target:	SULT1E1
Alternative Name:	SULT1E1 (SULT1E1 Products)
Background:	<p>Description: Sulfotransferase that utilizes 3'-phospho-5'-adenylyl sulfate (PAPS) as sulfonate donor to catalyze the sulfate conjugation of estradiol and estrone. May play a role in the regulation of estrogen receptor activity by metabolizing free estradiol. Maximally sulfates beta-estradiol and estrone at concentrations of 20 nM. Also sulfates dehydroepiandrosterone, pregnenolone, ethinylestradiol, equalenin, diethylstilbesterol and 1-naphthol, at significantly higher concentrations, however, cortisol, testosterone and dopamine are not sulfated.</p> <p>Gene: SULT1E1</p>
Molecular Weight:	32-35 kDa
Gene ID:	6783
UniProt:	P49888
Pathways:	Steroid Hormone Biosynthesis

Application Details

Application Notes:	WB 1:500-1:2000, IHC 1:50-1:200, IF/ICC 1:100-1:500
Restrictions:	For Research Use only

Handling

Format:	Liquid
Concentration:	1 mg/mL
Buffer:	Rabbit IgG in phosphate buffered saline , pH 7.4, 150 mM NaCl, 0.02 % sodium azide and 50 % glycerol.
Preservative:	Sodium azide
Precaution of Use:	This product contains Sodium azide: a POISONOUS AND HAZARDOUS SUBSTANCE which should be handled by trained staff only.
Storage:	-20 °C
Storage Comment:	Store at -20 °C. Stable for 12 months from date of receipt.
Expiry Date:	12 months

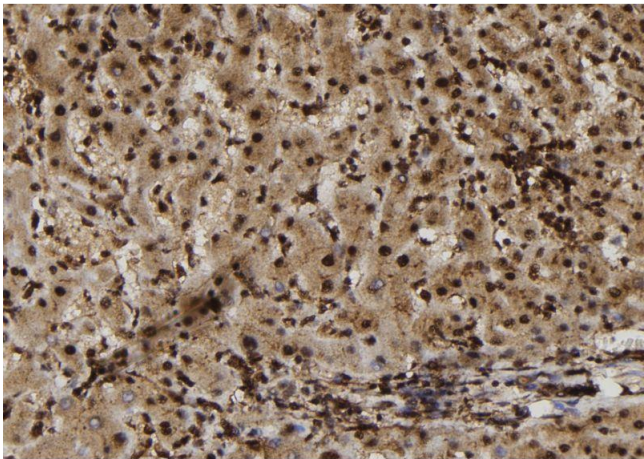


Western Blotting

Image 1. Western blot analysis of extracts of human adrenal gland tissue, using SULT1E1 antibody.

Western Blotting

Image 2. Western blot analysis of extracts from mouse lung, using SULT1E1 antibody. Lane 1 was treated with the blocking peptide.



Immunohistochemistry

Image 3. ABIN6272981 at 1/100 staining Human liver tissue by IHC-P. The sample was formaldehyde fixed and a heat mediated antigen retrieval step in citrate buffer was performed. The sample was then blocked and incubated with the antibody for 1.5 hours at 22°C. An HRP conjugated goat anti-rabbit antibody was used as the secondary.