

Datasheet for ABIN6265371  
**anti-SULT2A1 antibody (C-Term)**

## 3 Images

[Go to Product page](#)

## Overview

Quantity:	100 µL
Target:	SULT2A1
Binding Specificity:	C-Term
Reactivity:	Human, Mouse, Rat
Host:	Rabbit
Clonality:	Polyclonal
Conjugate:	This SULT2A1 antibody is un-conjugated
Application:	Western Blotting (WB), ELISA, Immunohistochemistry (IHC)

## Product Details

Immunogen:	A synthesized peptide derived from human SULT2A1, corresponding to a region within C-terminal amino acids.
Isotype:	IgG
Specificity:	SULT2A1 Antibody detects endogenous levels of total SULT2A1.
Predicted Reactivity:	Bovine,Horse,Rabbit
Purification:	The antiserum was purified by peptide affinity chromatography using SulfoLink™ Coupling Resin (Thermo Fisher Scientific).

## Target Details

Target:	SULT2A1
---------	---------

## Target Details

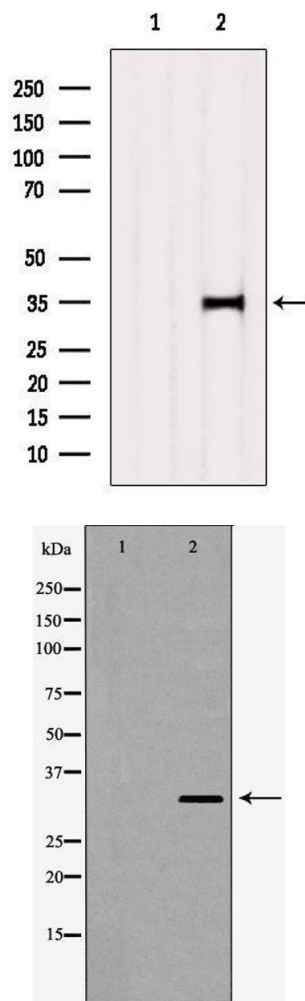
Alternative Name:	SULT2A1 ( <a href="#">SULT2A1 Products</a> )
Background:	Description: Sulfotransferase that utilizes 3'-phospho-5'-adenylyl sulfate (PAPS) as sulfonate donor to catalyze the sulfonation of steroids and bile acids in the liver and adrenal glands. Gene: SULT2A1
Molecular Weight:	34kDa
Gene ID:	6822
UniProt:	<a href="#">Q06520</a>
Pathways:	<a href="#">Steroid Hormone Biosynthesis</a> , <a href="#">Regulation of Lipid Metabolism by PPARalpha</a> , <a href="#">Monocarboxylic Acid Catabolic Process</a>

## Application Details

Application Notes:	WB 1:500-1:2000, IHC 1:50-1:200, ELISA(peptide) 1:20000-1:40000
Restrictions:	For Research Use only

## Handling

Format:	Liquid
Concentration:	1 mg/mL
Buffer:	Rabbit IgG in phosphate buffered saline , pH 7.4, 150 mM NaCl, 0.02 % sodium azide and 50 % glycerol.
Preservative:	Sodium azide
Precaution of Use:	This product contains Sodium azide: a POISONOUS AND HAZARDOUS SUBSTANCE which should be handled by trained staff only.
Storage:	-20 °C
Storage Comment:	Store at -20 °C. Stable for 12 months from date of receipt.
Expiry Date:	12 months

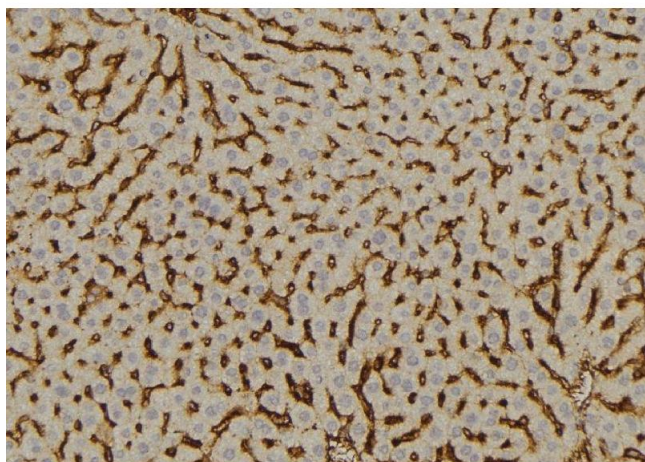


### Western Blotting

**Image 1.** Western blot analysis of extracts from 3t3, using SULT2A1 Antibody. The lane on the left was treated with blocking peptide.

### Western Blotting

**Image 2.** Western blot analysis of Hela cell lysate, using SULT2A1 Antibody. The lane on the left is treated with the antigen-specific peptide.



### Immunohistochemistry

**Image 3.** ABIN6277613 at 1/100 staining Mouse liver tissue by IHC-P. The sample was formaldehyde fixed and a heat mediated antigen retrieval step in citrate buffer was performed. The sample was then blocked and incubated with the antibody for 1.5 hours at 22°C. An HRP conjugated goat anti-rabbit antibody was used as the secondary