



Datasheet for ABIN6265377
anti-SUOX antibody (Internal Region)



[Go to Product page](#)

3 Images

Overview

Quantity:	100 µL
Target:	SUOX
Binding Specificity:	Internal Region
Reactivity:	Human, Mouse, Rat
Host:	Rabbit
Clonality:	Polyclonal
Conjugate:	This SUOX antibody is un-conjugated
Application:	Western Blotting (WB), Immunohistochemistry (IHC), Immunocytochemistry (ICC), Immunofluorescence (IF)

Product Details

Immunogen:	A synthesized peptide derived from human SUOX, corresponding to a region within the internal amino acids.
Isotype:	IgG
Specificity:	SUOX Antibody detects endogenous levels of total SUOX.
Predicted Reactivity:	Pig,Bovine,Horse,Sheep,Rabbit,Dog
Purification:	The antiserum was purified by peptide affinity chromatography using SulfoLink™ Coupling Resin (Thermo Fisher Scientific).

Target Details

Target:	SUOX
---------	------

Target Details

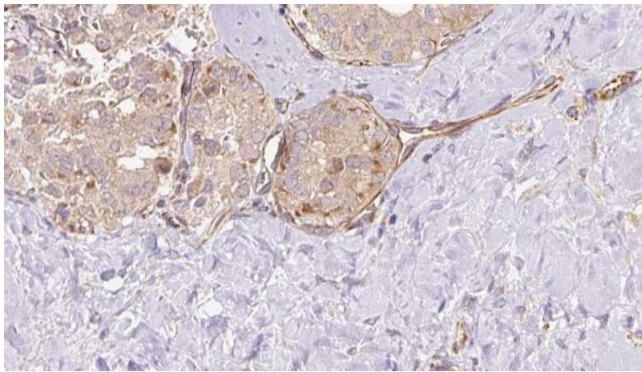
Alternative Name:	SUOX (SUOX Products)
Background:	Description: Sulfite + O2 + H2O = sulfate + H2O2. Gene: SUOX
Molecular Weight:	52 kDa, 60 kDa
Gene ID:	6821
UniProt:	P51687

Application Details

Application Notes:	WB 1:500-1:2000, IHC 1:50-1:200, IF/ICC 1:100-1:500
Restrictions:	For Research Use only

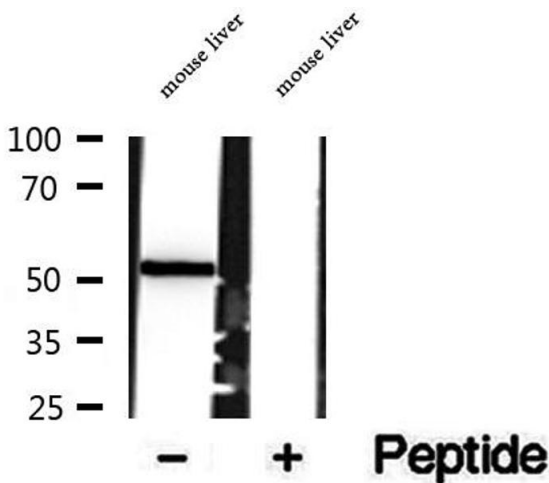
Handling

Format:	Liquid
Concentration:	1 mg/mL
Buffer:	Rabbit IgG in phosphate buffered saline , pH 7.4, 150 mM NaCl, 0.02 % sodium azide and 50 % glycerol.
Preservative:	Sodium azide
Precaution of Use:	This product contains Sodium azide: a POISONOUS AND HAZARDOUS SUBSTANCE which should be handled by trained staff only.
Storage:	-20 °C
Storage Comment:	Store at -20 °C. Stable for 12 months from date of receipt.
Expiry Date:	12 months



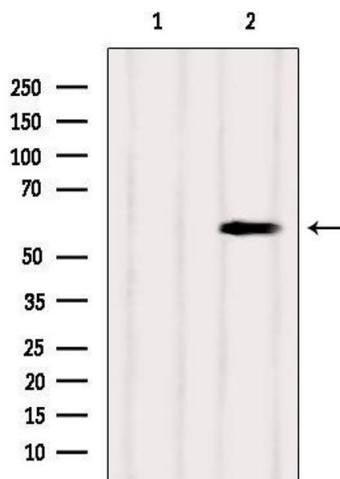
Immunohistochemistry

Image 1. ABIN6273326 at 1/100 staining Human thyroid cancer tissue by IHC-P. The sample was formaldehyde fixed and a heat mediated antigen retrieval step in citrate buffer was performed. The sample was then blocked and incubated with the antibody for 1.5 hours at 22°C. An HRP conjugated goat anti-rabbit antibody was used as the secondary.



Western Blotting

Image 2. Western blot analysis of extracts of mouse liver tissue, using SUOX antibody.



Western Blotting

Image 3. Western blot analysis of extracts from Mouse brain, using SUOX Antibody. The lane on the left was treated with blocking peptide.