

Datasheet for ABIN6265392  
**anti-SYN1 antibody (N-Term)**

## 2 Images

[Go to Product page](#)

## Overview

Quantity:	100 µL
Target:	SYN1
Binding Specificity:	N-Term
Reactivity:	Human, Mouse, Rat
Host:	Rabbit
Clonality:	Polyclonal
Conjugate:	This SYN1 antibody is un-conjugated
Application:	Western Blotting (WB), ELISA, Immunohistochemistry (IHC), Immunofluorescence (IF), Immunocytochemistry (ICC)

## Product Details

Immunogen:	A synthesized peptide derived from human Synapsin I, corresponding to a region within N-terminal amino acids.
Isotype:	IgG
Specificity:	Synapsin I Antibody detects endogenous levels of total Synapsin I.
Predicted Reactivity:	Pig,Zebrafish,Bovine,Sheep,Rabbit,Xenopus
Purification:	The antiserum was purified by peptide affinity chromatography using SulfoLink™ Coupling Resin (Thermo Fisher Scientific).

## Target Details

Target:	SYN1
---------	------

## Target Details

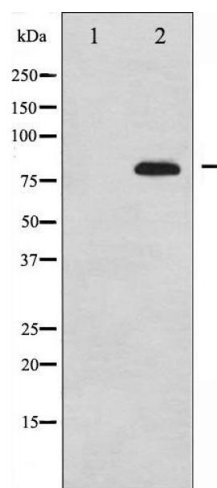
Alternative Name:	SYN1 ( <a href="#">SYN1 Products</a> )
Background:	<p>Description: Neuronal phosphoprotein that coats synaptic vesicles, binds to the cytoskeleton, and is believed to function in the regulation of neurotransmitter release. The complex formed with NOS1 and CAPON proteins is necessary for specific nitric-oxid functions at a presynaptic level.</p> <p>Gene: SYN1</p>
Molecular Weight:	77kDa
Gene ID:	6853
UniProt:	<a href="#">P17600</a>

## Application Details

Application Notes:	WB 1:500-1:2000, IF/ICC 1:100-1:500, IHC 1:50-1:200, ELISA(peptide) 1:20000-1:40000
Restrictions:	For Research Use only

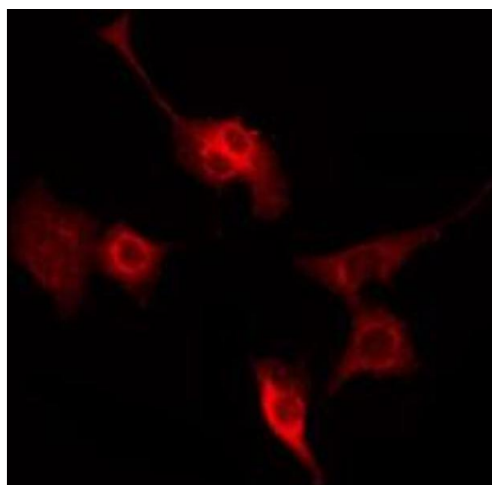
## Handling

Format:	Liquid
Concentration:	1 mg/mL
Buffer:	Rabbit IgG in phosphate buffered saline , pH 7.4, 150 mM NaCl, 0.02 % sodium azide and 50 % glycerol.
Preservative:	Sodium azide
Precaution of Use:	This product contains Sodium azide: a POISONOUS AND HAZARDOUS SUBSTANCE which should be handled by trained staff only.
Storage:	-20 °C
Storage Comment:	Store at -20 °C. Stable for 12 months from date of receipt.
Expiry Date:	12 months



### Western Blotting

**Image 1.** Western blot analysis of Synapsin expression in PMA treated 293 whole cell lysates. The lane on the left is treated with the antigen-specific peptide.



### Immunofluorescence (fixed cells)

**Image 2.** ABIN6269172 staining HeLa by IF/ICC. The sample were fixed with PFA and permeabilized in 0.1% Triton X-100, then blocked in 10% serum for 45 minutes at 25°C. The primary antibody was diluted at 1/200 and incubated with the sample for 1 hour at 37°C. An Alexa Fluor 594 conjugated goat anti-rabbit IgG (H+L) Ab, diluted at 1/600, was used as the secondary antibody.